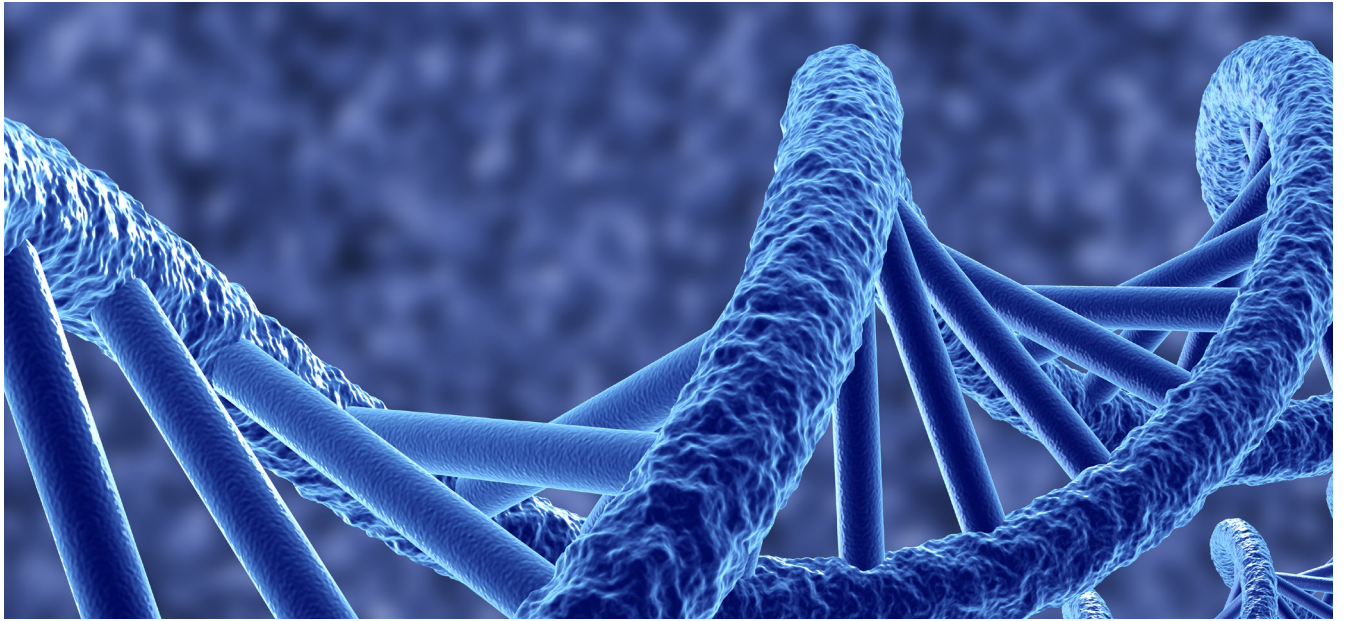


JUNE 2017



RHENMAN HEALTHCARE EQUITY L/S

OUTSTANDING LONG-TERM PERFORMANCE IN A COMPLEX MARKET

- Annualised return of 21 % (net) since inception.
- Over 20 years managing successful healthcare funds.
- World renowned industry professionals each with over 30 years experience actively involved through the Scientific Advisory Board.
- Unquestionable alpha generation. outperforming all relevant indices and top quartile in all relevant rankings.
- Long term investment horizon:
 - Diversified across subsectors. company size and geographies to lower volatility.
 - Active trading around holdings.
 - Predominantly cash flow positive companies.
 - Typically investing post approval, mitigating event risk.

MONTHLY UPDATE

In the absence of financial reports and major political developments, central banks came in focus yet again. By mid-month, the US central bank, the Federal Reserve, as expected raised its key rate by a quarter of a percentage point. Investors, however, saw reasons for doubting the future pace of interest rate hikes. At the end of June, the President of the European Central Bank, Mario Draghi, made positive statements about economic growth in Europe, which was interpreted as heralding tightening of the extremely expansive monetary policy in the region. Overall, this led to a sharp strengthening of the euro against the US dollar.

Calculated in euro, the world index fell 1.3 percent in June. The month was characterized by continued strong sector rotation. This year's by far strongest sector, information technology, came off just over 4 percent, while banks, which rose by almost 3 percent, was the only sector that appreciated on a global basis. Overall, the

world index thereby fell back in the second quarter, and the year's positive performance was halved to 1.1 percent.

The fact that information technology and some consumer discretionary companies - which have developed very strongly over a long period of time - with no apparent cause suddenly fell, was likely to have several explanations: First, investors began to doubt that the high expectations will be able to be met, and that rising bond yields could hit valuations. At the same time, improved prospects were noted in other sectors. Specifically, U.S. banks announced dividend increases immediately after the completion of the stress tests. Thus, June developed in the opposite direction compared to the previous month when banks and healthcare were the worst sectors.

Another reason for the heightened volatility is the increased use of Exchange Traded Funds (ETFs) at the expense of traditional

Continued on the next page ➤

equity funds. The inflows into these products accelerated during the first half of the year and were in the US at an annual rate which would mean that 2017 alone will equal 2015 and 2016 combined. The popularity of ETFs is largely based on the simplicity and speed to get exposure to a market or sector. This tends to boost upturns in sectors that have already developed strongly. Subsequently, when investors, for one reason or another, want to change their exposure it goes as easy and fast in the other direction.

FUND PERFORMANCE

The Fund's main share class, IC1 (EUR), rose by 9.8 percent in June.

The best contributors of the month were Exelixis, Novocure and Horizon. Worst contributions came from Roche, Galapagos and Shire. The US biotech company Exelixis surged together with the rest of the biotech sector mid-month, but in addition to that, Exelixis announced positive news that an independent review of the company's kidney cancer study confirmed positive effects of the drug. Novocure, a medtech company focused on cancer, continued to convert skeptics with clinical successes, with share appreciation as a result. In addition to convincing data in brain cancer, the technology shows early but promising results in other cancers, e.g. pancreatic cancer. The specialty pharmacy company Horizon, which has been the fund's worst contributor this year, made a comeback in June. Several analysts in the market highlighted the stock as undervalued even if they were to completely write down the primary care side of the business, which, in spite of everything, should have at least some value. The oncology company Roche was weak after a large breast cancer study only

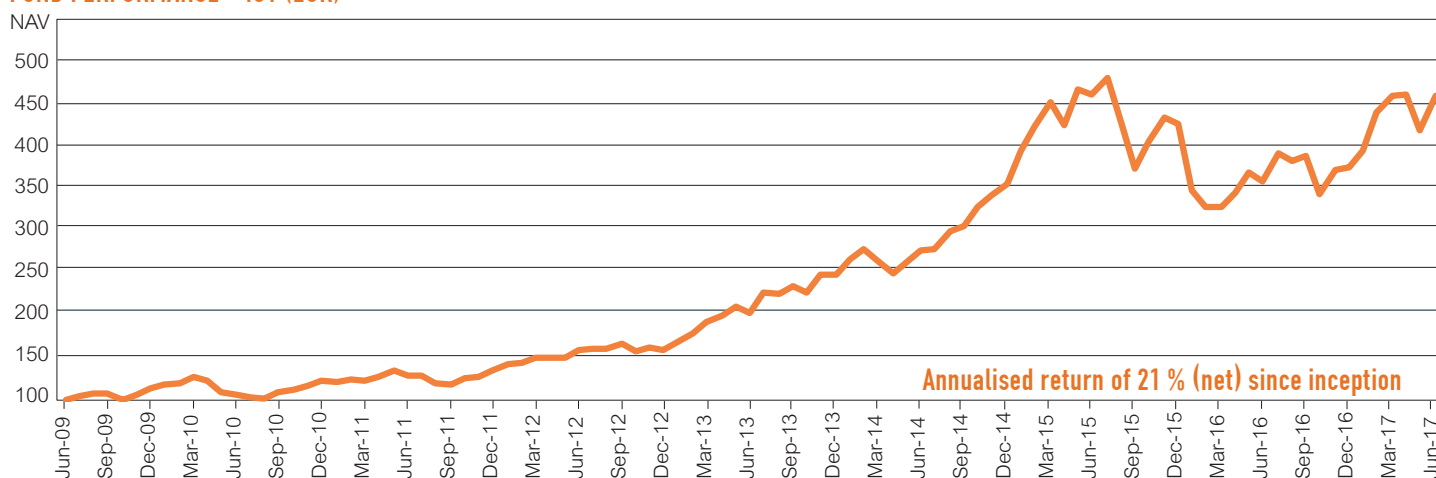
succeeded marginally and was only really clinically relevant in a subgroup. The apprehension now is that the growth for the drug in the study, Perjeta, may decrease in the future. The Belgian biotech company Galapagos performed strongly until April this year, but since then it has been weak, partly because the market was worried that their cystic fibrosis program had been too rushed. In conjunction with the company's R&D day in June, it was announced that the program is somewhat delayed, as feared. The specialty pharma company Shire had an eventful month, including new generic competition for its drug against ulcerative colitis, an approval for a new drug against ADHD, and increased concern for competition from Roche in hemophilia, with a weak share price as a net result.

FORECAST

The very weak development for the healthcare sector in May was replaced by an equally strong performance in June. The simplest and most reasonable explanation was that profit taking occurred - "sell in May and go away" - in combination with speculators closing positions before the important cancer conference, ASCO. After that, more long-term investors could buy at attractive levels and yet another upswing took place. Overall there really have not been any major or fundamental news in the healthcare market over the past two months, but sentiment shifted dramatically from May to June.

However, in Washington a political process is progressing slowly. After the House of Representatives narrowly voted yes for a bill for a severely reduced version of Obamacare, the Senate has now taken over. The idea was that the Senate, before the long weekend of Independence Day on July 4th, would vote for its

FUND PERFORMANCE - IC1 (EUR)



JUNE 2017

SHARE CLASS	NAV	MONTHLY RETURN	YTD 2017	SINCE INCEPTION ¹
IC1 (EUR)	455.96	9.79%	22.42%	355.96%
IC3 (EUR)	517.72	9.82%	22.46%	417.72%
IC2 (SEK)	318.16	8.11%	21.96%	218.16%
ID1 (SEK)	259.22	8.09%	18.69%	159.22%
IC1 (USD)	116.97	10.71%	31.65%	16.97%
IC2 (USD)	156.98	10.63%	31.83%	56.98%
RC1 (EUR)	400.14	9.82%	22.19%	300.14%
RC1 (SEK)	390.79	8.07%	21.80%	290.79%
RC2 (SEK)	405.23	8.09%	21.87%	305.23%
3 month Euribor (EUR)	103.44	-0.03%	-0.16%	3.44%

Notes: ¹ Please find launch date information on page 4 and 6.

own version of the reform. A handful of senators are, however, very skeptical about the proposal drawn up by a small group of senior senators, believing that the reduced Medicaid funding firstly would mean that too many poor people lose the opportunity to obtain health insurance that they can afford, and secondly has a very doubtful distribution profile favoring the rich. These hesitating senators are either from relatively blue, liberal states or facing tough opposition in the mid-term elections in 2018. As the proposal in the Senate saves significantly more money than the proposal from the House of Representatives, a sufficiently financed compromise may be presented in July. Now a very important phase to reform Obamacare will start with intense efforts to negotiate with, and persuade, individual senators.

Many generalists are cautious about investing in the healthcare sector before a reformed Obamacare bill has been approved by the Congress. We see different, more or less likely, future scenarios and consider these to be on the side of the optimist. In fact, we find that the most negative scenario is that Obamacare remains intact. The reason for this is, in that case, the conditions for a comprehensive tax reform will likely decrease, which would be negative for the US stock market as a whole. A reform of Obamacare, legislated by Congress, either significant or limited, should lead to rising share prices for the healthcare sector; however, the new reform should not be so marginal that a tax reform does not get the prerequisites to succeed, neither so scaled back in terms of coverage that the Republicans, with certainty, will lose the election in 2018. ■

FUND CHARACTERISTICS

KIID AND PROSPECTUS (WEBPAGE)

<http://fundinfo.sebfundservices.lu/RhenmanPartnersFund/>

INVESTABLE CURRENCIES

Euro (EUR) / Swedish Krona (SEK) / US Dollar (USD)

TARGET FUND SIZE

EUR 1bn (hard close)

RETURN TARGET

Annualised net returns in excess of 12% over time

LEGAL STRUCTURE

AIF / FCP (Fonds Commun de Placement) under Part II of the Luxembourg Law on Investment Funds

PORTFOLIO MANAGER

Rhenman & Partners Asset Management AB

AIFM / MANAGEMENT COMPANY

SEB Fund Services S.A.

PRIME BROKER

Skandinaviska Enskilda Banken AB (publ)

DEPOSITARY AND PAYING AGENT

Skandinaviska Enskilda Banken S.A.

AUDITOR

PricewaterhouseCoopers (PwC)

SUBSCRIPTION / REDEMPTION

Monthly

MINIMUM TOP UP

No minimum

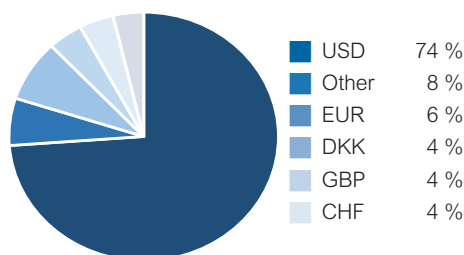
NOTICE PERIOD

3 working days

HURDLE RATE

Euribor 90D (high-water mark)

CURRENCY EXPOSURE²



PORTFOLIO CONSTRUCTION³

PYRAMID LEVEL	POSITION SIZE	NO.
High conviction	3 %-10 %	12
Core holdings	1 %-3 %	56
Fractional positions	0.5 %-1 %	36
Candidate holdings	0 %-0.5 %	35

EXPOSURE⁴

Long	173 %
Short	34 %
Gross	207 %
Net	139 %

RISK (IC1 EUR)

Value at risk ⁵	2.56 %
Standard Deviation ⁶	20.70 %
Sharpe Ratio ⁶	0.99

AUM⁷

Fund:
EUR 468m
USD 534m
Firm:
EUR 506m

LARGEST LONG POSITIONS

1 Horizon Pharma Plc
2 Exelixis Inc
3 NovoCure Ltd Reg
4 Alexion Pharmaceuticals Inc
5 Celgene Corp

SHARE CLASS CHARACTERISTICS – INSTITUTIONAL SHARE CLASSES (ONLY INSTITUTIONAL INVESTORS)⁸

	MINIMUM INVESTMENT	MGT. FEE	PERF. FEE	ISIN NUMBER	BLOOMBERG TICKER	LIPPER REUTERS	TELEKURS
IC1 (EUR)	250,000	1.50 %	20 %	LU0417598108	RHLEIC1 LX	65147588	10034579
IC3 (EUR)	5,000,000	1.50 %	10 %	LU0434614789	RHHIC3 LX	68014068	10283697
IC2 (SEK)	50,000,000	1.00 %	20 %	LU0417598793	RHHIC2S LX	68204997	20323930
ID1 (SEK)	100,000	1.50 %	20 %	LU0417599098	RHHIC1D1 LX	68153820	18491109
IC1 (USD)	300,000	1.50 %	20 %	LU0417598280	RHUIC1A LX	68305812	26812813
IC2 (USD)	6,000,000	1.00 %	20 %	LU0417598520	RHUIC2U LX	68265724	24456000

SHARE CLASS CHARACTERISTICS – RETAIL SHARE CLASSES (ALSO OPEN TO INSTITUTIONAL INVESTORS)⁸

RC1 (EUR)	2,500	2.00 %	20 %	LU0417597555	RHLERC1 LX	65147589	10034567
RC1 (SEK)	500	2.00 %	20 %	LU0417597712	RHLSRC1 LX	68014067	10239523
RC2 (SEK)	2,500,00	1.50 %	20 %	LU0417598017	RHLSRC2 LX	68015239	10239528

Notes: ² As a percentage of the market value of the long and short positions (excluding cash positions). ³ Number of long equity positions (excluding any ETFs). ⁴ The exposure is adjusted for net fund flow at month end. ⁵ For holdings at month end (95 % conf. int. 250 days history). ⁶ Standard deviation and Sharpe ratio are annualized. ⁷ The AUM is adjusted for net fund flow at month end.

⁸ Administrative fees are charged in addition to the fees above. Further information is available in the KIID as well as the prospectus (part B. A14-18).

HISTORICAL RETURNS AND NAVS

IC1 (EUR) NAV												
YEAR	JAN	FEB	MAR	APR	MAY	JUN	JUL	AUG	SEP	OCT	NOV	DEC
2009						100.75	105.19	107.47	107.83	100.99	105.70	113.28
2010	117.91	119.94	127.53	122.31	108.73	106.40	102.84	102.63	109.95	112.16	116.17	122.73
2011	121.53	124.28	123.35	127.79	134.24	129.26	128.19	119.36	118.28	125.67	127.48	134.59
2012	142.42	143.99	149.51	150.29	150.07	159.07	160.74	160.74	165.47	156.93	161.34	158.92
2013	168.92	178.11	191.91	198.41	209.10	202.53	225.87	223.66	233.45	225.66	246.67	246.79
2014	263.91	277.13	262.34	247.80	260.99	274.87	276.25	296.82	304.03	326.16	338.66	352.48
2015	391.34	419.34	448.65	421.01	463.44	456.29	476.60	424.39	370.76	401.72	430.21	423.32
2016	345.01	326.39	325.66	342.05	366.15	355.48	389.06	378.89	385.50	340.52	369.37	372.46
2017	391.88	436.08	454.95	456.28	415.30	455.96						

IC1 (EUR) PERFORMANCE %. NET OF FEES													
YEAR	JAN	FEB	MAR	APR	MAY	JUN	JUL	AUG	SEP	OCT	NOV	DEC	TOTAL
2009						0.75	4.41	2.17	0.33	-6.34	4.66	7.17	13.28
2010	4.09	1.72	6.33	-4.09	-11.10	-2.14	-3.35	-0.20	7.13	2.01	3.58	5.65	8.34
2011	-0.98	2.26	-0.75	3.60	5.05	-3.71	-0.83	-6.89	-0.90	6.25	1.44	5.58	9.66
2012	5.82	1.10	3.83	0.52	-0.15	6.00	1.05	0.00	2.94	-5.16	2.81	-1.50	18.08
2013	6.29	5.44	7.75	3.39	5.39	-3.14	11.52	-0.98	4.38	-3.34	9.31	0.05	55.29
2014	6.94	5.01	-5.34	-5.54	5.32	5.32	0.50	7.45	2.43	7.28	3.83	4.08	42.83
2015	11.02	7.15	6.99	-6.16	10.08	-1.54	4.45	-10.95	-12.64	8.35	7.09	-1.60	20.10
2016	-18.50	-5.40	-0.22	5.03	7.05	-2.91	9.45	-2.61	1.74	-11.67	8.47	0.84	-12.01
2017	5.21	11.28	4.33	0.29	-8.98	9.79							22.42

IC2 (SEK) NAV												
YEAR	JAN	FEB	MAR	APR	MAY	JUN	JUL	AUG	SEP	OCT	NOV	DEC
2013	105.95	109.53	117.11	123.34	131.02	128.83	142.56	142.09	147.55	144.39	159.03	158.77
2014	169.27	178.14	170.53	162.83	172.56	182.30	184.56	197.44	201.10	218.77	227.47	240.91
2015	264.32	283.76	300.86	285.57	313.96	305.90	326.08	292.97	252.07	273.89	288.10	281.94
2016	232.96	221.76	219.09	228.93	248.02	243.80	270.79	263.91	270.85	245.87	263.97	260.88
2017	270.49	305.07	315.32	318.79	292.29	318.16						

IC2 (SEK) PERFORMANCE %. NET OF FEES													
YEAR	JAN	FEB	MAR	APR	MAY	JUN	JUL	AUG	SEP	OCT	NOV	DEC	TOTAL
2013	5.95	3.38	6.92	5.32	6.23	-1.67	10.66	-0.33	3.84	-2.14	10.14	-0.16	58.77
2014	6.61	5.24	-4.27	-4.52	5.98	5.64	1.24	6.98	1.85	8.79	3.98	5.91	51.74
2015	9.72	7.35	6.03	-5.08	9.94	-2.57	6.60	-10.15	-13.96	8.66	5.19	-2.14	17.03
2016	-17.37	-4.81	-1.20	4.49	8.34	-1.70	11.07	-2.54	2.63	-9.22	7.36	-1.17	-7.47
2017	3.68	12.78	3.36	1.10	-7.69	8.11							21.96

IC1 (USD) NAV												
YEAR	JAN	FEB	MAR	APR	MAY	JUN	JUL	AUG	SEP	OCT	NOV	DEC
2015		106.43	109.37	107.12	114.84	114.48	118.78	107.70	93.74	100.50	102.88	104.09
2016	84.51	80.27	84.02	88.68	92.24	89.25	98.50	95.48	98.04	84.48	88.63	88.85
2017	95.78	104.78	110.08	112.50	105.65	116.97						

IC1 (USD) PERFORMANCE %. NET OF FEES													
YEAR	JAN	FEB	MAR	APR	MAY	JUN	JUL	AUG	SEP	OCT	NOV	DEC	TOTAL
2015		6.43	2.76	-2.06	7.21	-0.31	3.76	-9.33	-12.96	7.21	2.37	1.18	4.09
2016	-18.81	-5.02	4.67	5.55	4.01	-3.24	10.36	-3.07	2.68	-13.83	4.91	0.25	-14.64
2017	7.80	9.40	5.06	2.20	-6.09	10.71							31.65

IC2 (USD) NAV												
YEAR	JAN	FEB	MAR	APR	MAY	JUN	JUL	AUG	SEP	OCT	NOV	DEC
2014					102.92	108.60	106.82	113.71	112.69	120.10	124.21	126.40
2015	132.75	141.32	145.96	143.02	153.38	152.95	158.76	143.26	124.74	133.79	137.03	138.70
2016	112.66	107.07	112.12	118.40	123.21	119.27	131.69	127.71	131.20	113.12	118.73	119.08
2017	128.42	140.54	147.72	151.02	141.89	156.98						

IC2 (USD) PERFORMANCE %. NET OF FEES													
YEAR	JAN	FEB	MAR	APR	MAY	JUN	JUL	AUG	SEP	OCT	NOV	DEC	TOTAL
2014					2.92	5.52	-1.64	6.45	-0.90	6.58	3.42	1.76	26.40
2015	5.02	6.46	3.28	-2.01	7.24	-0.28	3.80	-9.76	-12.93	7.26	2.42	1.22	9.73
2016	-18.77	-4.96	4.72	5.60	4.06	-3.20	10.41	-3.02	2.73	-13.78	4.96	0.29	-14.15
2017	7.84	9.44	5.11	2.23	-6.05	10.63							31.83

IC3 (EUR) NAV												
YEAR	JAN	FEB	MAR	APR	MAY	JUN	JUL	AUG	SEP	OCT	NOV	DEC
2009								102.15	103.33	96.78	101.30	109.19
2010	114.20	116.43	124.73	119.62	106.33	104.06	100.57	100.37	107.52	109.68	113.59	120.00
2011	118.82	121.50	120.59	124.92	131.89	126.43	125.36	116.73	115.66	122.76	124.53	132.03
2012	140.67	142.42	148.58	149.43	149.16	159.24	161.09	161.06	166.38	157.79	162.21	159.79
2013	170.25	180.70	196.39	203.85	216.23	208.50	235.66	233.03	244.50	236.34	260.09	260.40
2014	280.76	296.58	279.47	263.97	278.02	294.48	296.09	321.00	329.83	356.89	372.31	389.50
2015	437.99	471.80	508.68	477.10	527.32	518.14	544.00	481.68	420.82	455.95	488.29	480.47
2016	391.59	370.46	369.62	388.23	415.58	403.47	441.58	430.05	437.55	386.50	419.24	422.75
2017	444.79	494.96	516.44	518.14	471.42	517.72						

IC3 (EUR) PERFORMANCE %. NET OF FEES													
YEAR	JAN	FEB	MAR	APR	MAY	JUN	JUL	AUG	SEP	OCT	NOV	DEC	TOTAL
2009								2.15	1.16	-6.34	4.67	7.79	9.19
2010	4.59	1.95	7.13	-4.10	-11.11	-2.13	-3.35	-0.20	7.12	2.01	3.56	5.64	9.90
2011	-0.98	2.26	-0.75	3.59	5.58	-4.14	-0.85	-6.88	-0.92	6.14	1.44	6.02	10.03
2012	6.54	1.24	4.33	0.57	-0.18	6.76	1.16	-0.02	3.30	-5.16	2.80	-1.49	21.03
2013	6.55	6.14	8.68	3.80	6.07	-3.57	13.03	-1.12	4.92	-3.34	10.05	0.12	62.96
2014	7.82	5.63	-5.77	-5.55	5.32	5.92	0.55	8.41	2.75	8.20	4.32	4.62	49.58
2015	12.45	7.72	7.82	-6.21	10.53	-1.74	4.99	-11.46	-12.63	8.35	7.09	-1.60	23.36
2016	-18.50	-5.40	-0.23	5.03	7.04	-2.91	9.45	-2.61	1.74	-11.67	8.47	0.84	-12.01
2017	5.21	11.28	4.34	0.33	-9.02	9.82							22.46

ID1 (SEK) NAV												
YEAR	JAN	FEB	MAR	APR	MAY	JUN	JUL	AUG	SEP	OCT	NOV	DEC
2012					100.64	104.51	101.00	100.77	105.42	101.93	105.47	103.07
2013	109.66	109.21	116.69	122.83	130.33	127.88	141.46	140.87	146.24	143.04	157.52	157.19
2014	167.54	168.39	161.54	154.18	163.36	172.51	174.59	186.71	190.10	206.73	214.90	227.49
2015	249.52	256.41	271.30	257.41	282.93	275.68	293.76	263.61	226.72	246.24	258.91	253.27
2016	209.19	186.39	184.08	192.27	208.21	204.58	227.14	221.28	227.01	205.99	221.08	218.41
2017	226.36	247.58	257.17	259.92	239.81	259.22						

ID1 (SEK) PERFORMANCE %. NET OF FEES													
YEAR	JAN	FEB	MAR	APR	MAY	JUN	JUL	AUG	SEP	OCT	NOV	DEC	TOTAL
2012					0.64	3.85	-3.36	-0.23	4.61	-3.31	3.47	-2.28	3.07
2013	6.39	-0.41	6.85	5.26	6.11	-1.88	10.62	-0.42	3.81	-2.19	10.12	-0.21	52.51
2014	6.58	0.51	-4.07	-4.56	5.95	5.60	1.21	6.94	1.82	8.75	3.95	5.86	44.72
2015	9.68	2.76	5.81	-5.12	9.91	-2.56	6.56	-10.26	-13.99	8.61	5.15	-2.18	11.33
2016	-17.40	-10.90	-1.24	4.45	8.29	-1.74	11.03	-2.58	2.59	-9.26	7.33	-1.21	-13.76
2017	3.64	9.37	3.87	1.07	-7.74	8.09							18.69

RC1 (EUR) NAV												
YEAR	JAN	FEB	MAR	APR	MAY	JUN	JUL	AUG	SEP	OCT	NOV	DEC
2010									104.35	104.75	110.36	115.32
2011	114.18	116.50	115.79	119.40	125.10	120.47	119.15	110.91	109.86	116.68	118.31	124.92
2012	132.14	133.59	138.66	139.34	139.09	147.39	148.89	148.83	153.16	145.20	149.21	146.92
2013	156.14	164.59	177.28	183.22	192.89	185.65	206.96	204.86	212.69	205.49	224.58	224.79
2014	240.30	251.66	236.42	223.21	235.00	247.45	248.60	266.95	273.34	293.13	304.24	315.14
2015	349.47	373.47	398.19	373.48	411.03	404.45	422.31	375.75	328.13	355.37	380.41	374.15
2016	304.81	288.23	287.45	301.80	322.91	313.37	342.82	333.71	339.38	299.66	324.90	327.48
2017	344.40	383.08	399.53	400.83	364.36	400.14						

RC1 (EUR) PERFORMANCE %. NET OF FEES													
YEAR	JAN	FEB	MAR	APR	MAY	JUN	JUL	AUG	SEP	OCT	NOV	DEC	TOTAL
2010									4.35	0.38	5.36	4.49	15.32
2011	-0.99	2.03	-0.61	3.12	4.77	-3.70	-1.10	-6.92	-0.95	6.21	1.40	5.59	8.32
2012	5.78	1.10	3.80	0.49	-0.18	5.97	1.02	-0.04	2.91	-5.20	2.76	-1.53	17.61
2013	6.28	5.41	7.71	3.35	5.28	-3.75	11.48	-1.01	3.82	-3.39	9.29	0.09	53.00
2014	6.90	4.73	-6.06	-5.59	5.28	5.30	0.46	7.38	2.39	7.24	3.80	3.58	40.19
2015	10.89	6.87	6.62	-6.21	10.05	-1.60	4.42	-11.03	-12.67	8.30	7.05	-1.65	18.73
2016	-18.53	-5.44	-0.27	4.99	6.99	-2.95	9.40	-2.66	1.70	-11.70	8.42	0.79	-12.47
2017	5.17	11.23	4.29	0.33	-9.10	9.82							22.19

RC1 (SEK) NAV												
YEAR	JAN	FEB	MAR	APR	MAY	JUN	JUL	AUG	SEP	OCT	NOV	DEC
2009						99.74	99.92	101.00	101.51	96.72	101.85	106.75
2010	110.70	108.05	115.09	109.18	96.69	93.87	89.69	88.93	93.37	96.59	98.29	102.16
2011	98.91	100.22	101.80	105.28	111.04	109.04	107.03	100.09	100.29	104.24	106.42	111.05
2012	118.78	118.87	123.79	125.05	125.79	130.61	126.17	125.85	131.65	127.25	131.60	128.55
2013	136.76	141.24	150.89	158.78	168.47	165.25	182.72	181.89	188.61	184.41	203.02	202.38
2014	215.63	226.61	216.26	206.33	218.55	230.73	233.43	249.55	253.98	276.09	286.74	302.97
2015	332.20	356.11	376.45	357.02	392.32	381.98	406.89	365.09	313.86	340.74	358.11	350.16
2016	289.10	274.97	271.43	283.40	306.76	301.29	334.38	325.60	333.90	302.85	324.90	320.85
2017	332.37	374.59	388.12	392.14	361.60	390.79						

RC1 (SEK) PERFORMANCE % NET OF FEES													
YEAR	JAN	FEB	MAR	APR	MAY	JUN	JUL	AUG	SEP	OCT	NOV	DEC	TOTAL
2009						-0.26	0.18	1.08	0.50	-4.72	5.30	4.81	6.75
2010	3.70	-2.39	6.52	-5.14	-11.44	-2.92	-4.45	-0.85	4.99	3.45	1.76	3.94	-4.30
2011	-3.18	1.32	1.58	3.42	5.47	-1.80	-1.84	-6.48	0.20	3.94	2.09	4.35	8.70
2012	6.96	0.08	4.14	1.02	0.59	3.83	-3.40	-0.25	4.61	-3.34	3.42	-2.32	15.76
2013	6.39	3.28	6.83	5.23	6.10	-1.91	10.57	-0.45	3.69	-2.23	10.09	-0.32	57.43
2014	6.55	5.09	-4.57	-4.59	5.92	5.57	1.17	6.91	1.78	8.71	3.86	5.66	49.70
2015	9.65	7.20	5.71	-5.16	9.89	-2.64	6.52	-10.27	-14.03	8.56	5.10	-2.22	15.58
2016	-17.44	-4.89	-1.29	4.41	8.24	-1.78	10.98	-2.63	2.55	-9.30	7.28	-1.25	-8.37
2017	3.59	12.70	3.61	1.04	-7.79	8.07							21.80

RC2 (SEK) NAV												
YEAR	JAN	FEB	MAR	APR	MAY	JUN	JUL	AUG	SEP	OCT	NOV	DEC
2009						99.74	99.98	101.12	101.68	96.94	102.10	107.07
2010	111.07	108.57	115.69	109.78	97.28	94.47	90.31	89.58	94.10	97.38	99.14	103.08
2011	99.84	101.20	102.84	106.40	112.28	110.30	108.32	101.33	101.58	105.64	107.89	112.63
2012	120.30	120.44	125.51	126.83	127.66	132.58	128.13	127.86	133.77	129.36	133.84	130.80
2013	139.17	143.74	153.48	161.57	171.53	167.92	185.74	185.04	192.06	187.86	206.87	206.39
2014	219.98	231.28	221.05	210.98	223.54	236.05	238.90	255.47	260.24	283.00	293.97	310.92
2015	341.02	365.80	386.77	366.96	403.34	392.85	418.61	375.87	323.26	351.09	369.14	361.10
2016	298.25	283.80	280.26	292.73	317.00	311.48	345.83	336.89	345.62	313.62	336.59	332.52
2017	344.62	388.54	402.06	406.34	374.90	405.23						

RC2 (SEK) PERFORMANCE % NET OF FEES													
YEAR	JAN	FEB	MAR	APR	MAY	JUN	JUL	AUG	SEP	OCT	NOV	DEC	TOTAL
2009						-0.26	0.24	1.14	0.55	-4.66	5.32	4.87	7.07
2010	3.74	-2.25	6.56	-5.11	-11.39	-2.89	-4.40	-0.81	5.05	3.49	1.81	3.97	-3.73
2011	-3.14	1.36	1.62	3.46	5.53	-1.76	-1.80	-6.45	0.25	4.00	2.13	4.39	9.26
2012	6.81	0.12	4.21	1.05	0.65	3.85	-3.36	-0.21	4.62	-3.30	3.46	-2.27	16.13
2013	6.40	3.28	6.78	5.27	6.16	-2.10	10.61	-0.38	3.79	-2.19	10.12	-0.23	57.79
2014	6.58	5.14	-4.42	-4.56	5.95	5.60	1.21	6.94	1.87	8.75	3.88	5.77	50.65
2015	9.68	7.27	5.73	-5.12	9.91	-2.60	6.56	-10.21	-14.00	8.61	5.14	-2.18	16.14
2016	-17.41	-4.84	-1.25	4.45	8.29	-1.74	11.03	-2.59	2.59	-9.26	7.32	-1.21	-7.91
2017	3.64	12.74	3.48	1.06	-7.74	8.09							21.87

ABOUT RHENMAN & PARTNERS

Rhenman & Partners Asset Management, founded in 2008, is a Stockholm-based investment manager focusing on two niche funds: Rhenman Healthcare Equity L/S, founded in 2009, and Rhenman Global Opportunities L/S, founded in 2016. Assets under management amount to almost 5 billion SEK. Investment Teams of both Funds are in their investment processes supported by renowned Advisory Boards, including professors and experts with many years of market experience and extensive networks around the world.

LEGAL DISCLAIMER

Rhenman Healthcare Equity L/S. "The Fund" is not an investment fund as defined in the European Union directives relating to undertakings for collective investment in transferable securities (UCITS). Legal information regarding Fund is contained in the Prospectus and the KIID, available at Rhenman & Partners Asset Management AB (Rhenman & Partners) webpage: <http://rhepa.com/the-fund/prospectus/>.

This material has been prepared by Rhenman & Partners for professional and non-professional investors. Rhenman & Partners when preparing this information has not taken into account any one customer's particular investment objectives, financial resources or other relevant circumstances and the opinions and recommendations herein are not intended to represent recommendations of particular investments to particular customers. This material is for informational purposes only and should not be construed as an offer or solicitation to sell or buy units of the Fund. Investors is strongly recommended to get professional advice as to whether investment in the Fund is appropriate having regard to their particular investment needs, objectives and financial circumstances, before investing.

All securities' transactions involve risks, which include (among others) the risk of adverse or unanticipated market, financial or political developments and, in international transactions, currency risk. There can be no assurance that an investment in the Fund will achieve profits or avoid incurring substantial losses. There is a high degree of risk inherent in investments and they may not be suitable for all eligible investors. It is possible that an investor may lose some or all of its investment. The past is not necessarily a guide to the future performance of an investment. The value of investments may fall as well as rise and investors may not get back the amount invested. Changes in rates of foreign exchange may cause the value of investments to go up or down.

Before making an investment decision, an investor and/or its adviser should (i) consider the suitability of investments in the Fund with respect to its investment objectives and personal situation and (ii) consider factors such as its personal net worth, income, age, risk tolerance and liquidity needs. Short-term investors and investors who cannot bear the loss of some or all of their investment or the risks associated with the limited liquidity of an investment should not invest.

Due care and attention has been used in the preparation of this information. However, actual results may vary from their forecasts, and any variation may be materially positive or negative. Forecasts, by their very nature, are subject to uncertainty and contingencies, many of which are outside the control of Rhenman & Partners. Rhenman & Partners cannot guarantee that the information contained herein is without fault or entirely accurate. There may be delays, omissions or inaccuracies in the information. Any dated information is published as of its date only and no obligation or responsibility is undertaken to update or amend any such information.

The information in this material is based on sources that Rhenman & Partners believes to be reliable. Rhenman & Partners can however not guarantee that all information is correct. Furthermore, information and opinions may change without notice. Rhenman & Partners is under no obligation to make amendments or changes to this publication if errors are found or opinions or information change. Rhenman & Partners accepts no responsibility for the accuracy of its sources.

Rhenman & Partners is the owner of all works of authorship including, but not limited to, all design text, images and trademarks in this material unless otherwise explicitly stated. The use of Rhenman & Partners' material, works or trademarks is forbidden without written consent except where otherwise expressly stated. Furthermore, it is prohibited to publish material made or gathered by Rhenman & Partners without written consent.

By accessing and using the <http://rhepa.com/> website and any pages thereof, you acknowledge that you have reviewed the following important legal information and understand and agree to the terms and conditions set therein. If you do not agree to the terms and conditions in this disclaimer, do not access or use <http://rhepa.com/website> in any way.

Products and services described herein are not available to all persons in all geographical locations. Rhenman & Partner will not provide any such products or services to any person if the provision of such services could be in violation of law or regulation in such person's home country jurisdiction or any other related jurisdiction. The units of the Fund may not be offered or sold to or within the United States or in any other country where such offer or sale would conflict with applicable laws or regulations.

In no event, including (but not limited to) negligence, will Rhenman & Partner be liable to you or anyone else for any consequential, incidental, special or indirect damages (including but not limited to lost profits, trading losses and damages).

The sole legally binding basis for the purchase of shares of the Fund described in this information is the latest valid sales prospectus with its terms of contract. Subscriptions cannot be received on the basis of financial reports.

An investment in the Fund does not represent deposits or other liabilities of any member of the Rhenman & Partners Group. Neither Rhenman & Partners nor any member of the Rhenman & Partners Group and its affiliates guarantees in any way the performance of the Fund, repayment of capital from the Fund, any particular return from or any increase in the value of the Fund.

SUBSCRIBE TO OUR MONTHLY NEWSLETTER AT WWW.RHEPA.COM

CONTACT DETAILS

Rhenman & Partners
Asset Management AB
Strandvägen 5A
114 51 Stockholm, Sweden
Tel + 46 8 459 88 80
info@rhepa.com

International investors (non Swedish):
Carl Grevelius
Head of Investor Relations
Tel + 46 8 459 88 83
carl@rhepa.com

Swedish investors:
Anders Grelsson
Swedish Investor Relations
Mob + 46 70 374 43 20
anders@rhepa.com

WWW.RHEPA.COM