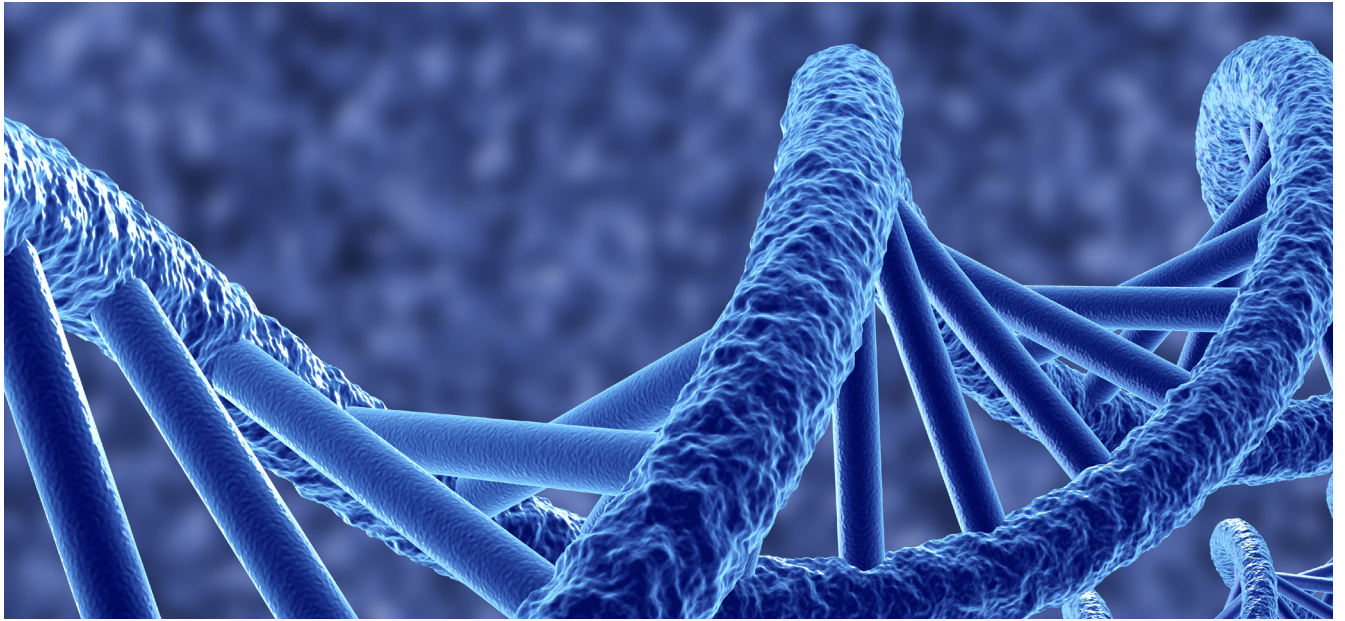


NOVEMBER 2017



# RHENMAN HEALTHCARE EQUITY L/S

## OUTSTANDING LONG-TERM PERFORMANCE IN A COMPLEX MARKET

- Annualised return of 21 % (net) since inception.
- Over 20 years managing successful healthcare funds.
- World renowned industry professionals each with over 30 years experience actively involved through the Scientific Advisory Board.
- Unquestionable alpha generation. outperforming all relevant indices and top quartile in all relevant rankings.
- Long term investment horizon:
  - Diversified across subsectors. company size and geographies to lower volatility.
  - Active trading around holdings.
  - Predominantly cash flow positive companies.
  - Typically investing post approval, mitigating event risk.

### MONTHLY UPDATE

As the flow of reports for the third quarter tapered off, investors once again became more focused on developments in the world economy and political processes. Surprisingly good statistics from most of the major economies in the world and, not least, the unexpected progress in US tax reform lifted the spirits of stock markets. Concerns about the separatist movement in Catalonia, North Korea's nuclear weapons programme and Brexit were all put aside. As a result, investors' risk appetite, which had been strong during the autumn, persisted.

The world index, measured in EUR, fell by 0.1 percent but rose in local currencies. Sector rotations continued, but the differences in returns were significantly lower than the previous month. Consumer staples and consumer discretionary spending came out on top, while energy and commodities lagged behind the broad indices.

Healthcare was unchanged.

Although the rise in the US stock market during November was stable, increasing expectations on US tax reform led to interesting trend-shifts in FAANG (Facebook, Apple, Amazon, Netflix, and Alphabet's Google) stocks in the US and BAT (Baidu, Alibaba and Tencent) stocks in China at the end of the month, which turned out to be the worst day in more than a year. One explanation could be that these companies do not directly benefit from US tax reform and that investors therefore sought out sectors that do, like banking. Another explanation could be profit taking and an increased interest to purchase in sectors that have been lagging.

### FUND PERFORMANCE

The fund increased by 5 percent in its main share class, IC1 (EUR).

*Continued on the next page* ➤

The best contributors of the month were Nektar Therapeutics, Adamas Pharmaceuticals and Esperion Therapeutics. The worst contributors were Glaukos, Alexion Pharmaceuticals and Acadia Pharmaceuticals. During the period, Nektar, the American biotechnology company, published very promising phase I/II data for its new cancer drug, NKTR-214. In the study, NKTR-214 was combined with Opdivo, a PD-1 inhibitor and approved cancer immunotherapy drug for a variety of tumours. With these promising results, the company has decided to extend the phase II study to include more types of tumours, which could increase its market potential. The positive news on NKTR-214 caused a sharp rise in its share price, since the company now has much greater commercial potential than before.

The US research company, Adamas (which was one of the fund's best contributors last month), reported continued strong share price performance in November. The company is preparing for the launch of Gocovri, its recently approved orphan drug for the treatment of involuntary movements caused by Parkinson's disease medication. The upcoming product launch has attracted great interest among investors, which had a positive impact on the share price. Esperion is a US research company developing a new drug (in tablet form) against dyslipidemia. The company is currently conducting a phase III study that it can hopefully use later on when filing for FDA approval. Publication of the full study results is expected during the second quarter of 2018 and investors are beginning to show more and more interest in, and understanding of, the company. This has resulted in a positive share price trend during the period. Glaukos is a US medtech company that develops and sells minimally invasive products that reduce pressure in the eye caused by glaucoma. Although Glaukos is a pioneer in this area, several competing products are now on their way to market.

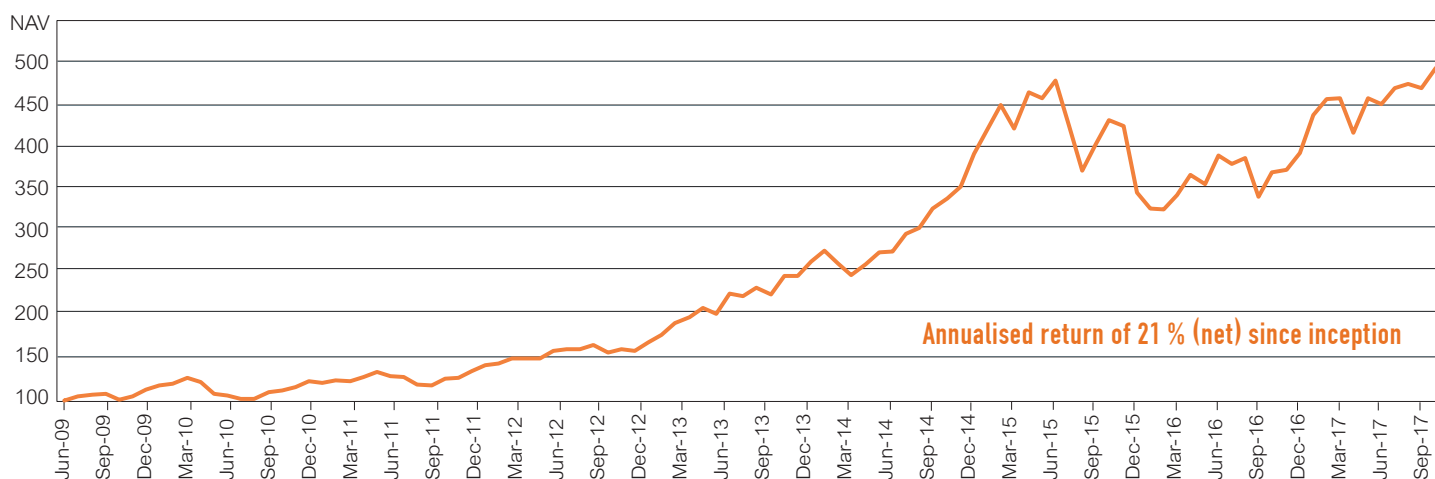
The increasing competition, together with concerns that reimbursement for the procedure will be reduced, led to a downward trend in the share price in November. Alexion is a biotech company focused on orphan drugs. In October, it received FDA approval on an important new indication for its drug Soliris, which increases its market potential significantly. Despite the positive news on the product portfolio, the share price trend was negative during the period as the market registered an increased risk of competition from several companies. One such competitor is Amgen, In November, it announced progress on its development of a biosimilar drug to Soliris. Acadia is a pharmaceutical company focused on central nervous system disorders (CNS). The company's product, Nuplazide, has obtained approval for the treatment of psychoses in patients with Parkinson's disease. Clinical studies are ongoing to evaluate the product in other indications. A phase II study for the treatment of psychosis in Alzheimer's patients was inconclusive, which caused its share price to fall in November.

#### FORECAST

The fund has performed strongly throughout the entire year, and also in November, due to successful stock picking. The healthcare sector has risen by just 5 percent thus far in 2017, compared to this fund, which has increased by 32 percent. A focus on high quality companies with strong research portfolios has been consistent with the market's way of reasoning. The fund's management has been characterized by a fairly consistent buying strategy when share prices have declined, followed by trimming back the holding as share prices have strengthened. It is a strategy that works well under favourable conditions, like rising stock markets.

The volatile autumn is now essentially behind us and many factors indicate rising share prices during the coming winter. We

### FUND PERFORMANCE - IC1 (EUR)



### NOVEMBER 2017

SHARE CLASS	NAV	MONTHLY RETURN	YTD 2017	SINCE INCEPTION <sup>1</sup>
IC1 (EUR)	491.88	5.02%	32.06%	391.88%
IC3 (EUR)	563.68	5.52%	33.34%	463.68%
IC2 (SEK)	352.83	6.44%	35.25%	252.83%
ID1 (SEK)	287.00	6.41%	31.40%	187.00%
IC1 (USD)	130.74	7.30%	47.15%	30.74%
IC2 (USD)	175.76	7.32%	47.60%	75.76%
RC1 (EUR)	431.35	4.99%	31.72%	331.35%
RC1 (SEK)	431.88	6.37%	34.60%	331.88%
RC2 (SEK)	448.59	6.40%	34.91%	348.59%
3 month Euribor (EUR)	103.30	-0.03%	-0.30%	3.30%

Notes: <sup>1</sup> Please find launch date information on page 4 and 6.

have decided to gradually reduce the fund's net exposure, which is an ambition we have had for some time but have had to postpone. This has been necessary due to sharp price corrections in individual companies, where we have taken the opportunity to buy at low prices. The sector is expected to perform well, particularly if US tax reform makes it through Congress and is signed by the president in late December. It should be emphasized that sectors other than the healthcare sector will benefit more from the tax reform, but the fund still has at least some exposure to companies that will most certainly benefit from a lower US corporate tax rate. Companies with a low valuation will probably experience renewed interest, which could benefit the major pharmaceutical companies. Lastly, we believe that the likelihood of renewed interest in mergers and acquisitions will be quite high because of the tax reform. Accordingly, 2018 has the potential to be a very exciting year! ■

## FUND CHARACTERISTICS

### KIID AND PROSPECTUS (WEBPAGE)

<http://fundinfo.sebfundservices.lu/RhenmanPartnersFund/>

### AIFM / MANAGEMENT COMPANY

SEB Fund Services S.A.

### PRIME BROKER

Skandinaviska Enskilda Banken AB (publ)

### INVESTABLE CURRENCIES

Euro (EUR) / Swedish Krona (SEK) / US Dollar (USD)

### DEPOSITARY AND PAYING AGENT

Skandinaviska Enskilda Banken S.A.

### TARGET FUND SIZE

EUR 1bn (hard close)

### RETURN TARGET

Annualised net returns in excess of 12% over time

### AUDITOR

PricewaterhouseCoopers (PwC)

### LEGAL STRUCTURE

AIF / FCP (Fonds Commun de Placement) under Part II of the Luxembourg Law on Investment Funds

### SUBSCRIPTION / REDEMPTION

Monthly

### PORTFOLIO MANAGER

Rhenman & Partners Asset Management AB

### MINIMUM TOP UP

No minimum

### INVESTMENT TEAM

Henrik Rhenman & Susanna Urdmark

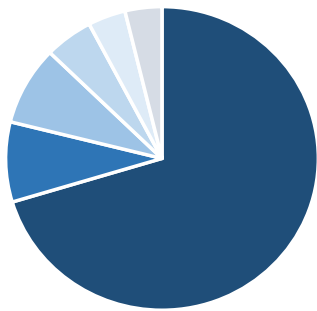
### NOTICE PERIOD

3 working days

### HURDLE RATE

Euribor 90D (high-water mark)

## CURRENCY EXPOSURE<sup>2</sup>



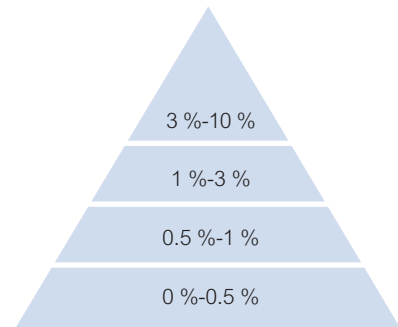
USD	75 %
Other	8 %
CHF	6 %
EUR	5 %
DKK	3 %
JPY	3 %

## PORTFOLIO CONSTRUCTION<sup>3</sup>

### PYRAMID LEVEL

High conviction  
Core holdings  
Fractional positions  
Candidate holdings

### POSITION SIZE



### NO.

12  
55  
24  
25

## EXPOSURE<sup>4</sup>

Long	169 %
Short	26 %
Gross	195 %
Net	143 %

## RISK (IC1 EUR)

Value at risk <sup>5</sup>	2.25 %
Standard Deviation <sup>6</sup>	20.29 %
Sharpe Ratio <sup>6</sup>	1.01

## AUM<sup>7</sup>

Fund:	EUR 509m
USD 606m	
Firm:	EUR 518m

## LARGEST LONG POSITIONS

1 Roche Holding Ltd
2 Horizon Pharma Plc
3 Nektar Therapeutics
4 Adamas Pharmaceuticals Inc
5 Esperion Therapeutics Inc

## SHARE CLASS CHARACTERISTICS – INSTITUTIONAL SHARE CLASSES (ONLY INSTITUTIONAL INVESTORS)<sup>8</sup>

	MINIMUM INVESTMENT	MGT. FEE	PERF. FEE	ISIN NUMBER	BLOOMBERG TICKER	LIPPER REUTERS	TELEKURS
IC1 (EUR)	250,000	1.50 %	20 %	LU0417598108	RHLEIC1 LX	65147588	10034579
IC3 (EUR)	5,000,000	1.50 %	10 %	LU0434614789	RHHIC3 LX	68014068	10283697
IC2 (SEK)	50,000,000	1.00 %	20 %	LU0417598793	RHHIC2S LX	68204997	20323930
ID1 (SEK)	100,000	1.50 %	20 %	LU0417599098	RHHIC1D1 LX	68153820	18491109
IC1 (USD)	300,000	1.50 %	20 %	LU0417598280	RHUIC1A LX	68305812	26812813
IC2 (USD)	6,000,000	1.00 %	20 %	LU0417598520	RHUIC2U LX	68265724	24456000

## SHARE CLASS CHARACTERISTICS – RETAIL SHARE CLASSES (ALSO OPEN TO INSTITUTIONAL INVESTORS)<sup>8</sup>

RC1 (EUR)	2,500	2.00 %	20 %	LU0417597555	RHLERC1 LX	65147589	10034567
RC1 (SEK)	500	2.00 %	20 %	LU0417597712	RHLSRC1 LX	68014067	10239523
RC2 (SEK)	2,500,000	1.50 %	20 %	LU0417598017	RHLSRC2 LX	68015239	10239528

Notes: <sup>2</sup> As a percentage of the market value of the long and short positions (excluding cash positions). <sup>3</sup> Number of long equity positions (excluding any ETFs). <sup>4</sup> The exposure is adjusted for net fund flow at month end. <sup>5</sup> For holdings at month end (95 % conf. int. 250 days history). <sup>6</sup> Standard deviation and Sharpe ratio are annualized. <sup>7</sup> The AUM is adjusted for net fund flow at month end. <sup>8</sup> Administrative fees are charged in addition to the fees above. Further information is available in the KIID as well as the prospectus (part B. A14-18).

## HISTORICAL RETURNS AND NAVS

IC1 (EUR) NAV												
YEAR	JAN	FEB	MAR	APR	MAY	JUN	JUL	AUG	SEP	OCT	NOV	DEC
2009						100.75	105.19	107.47	107.83	100.99	105.70	113.28
2010	117.91	119.94	127.53	122.31	108.73	106.40	102.84	102.63	109.95	112.16	116.17	122.73
2011	121.53	124.28	123.35	127.79	134.24	129.26	128.19	119.36	118.28	125.67	127.48	134.59
2012	142.42	143.99	149.51	150.29	150.07	159.07	160.74	160.74	165.47	156.93	161.34	158.92
2013	168.92	178.11	191.91	198.41	209.10	202.53	225.87	223.66	233.45	225.66	246.67	246.79
2014	263.91	277.13	262.34	247.80	260.99	274.87	276.25	296.82	304.03	326.16	338.66	352.48
2015	391.34	419.34	448.65	421.01	463.44	456.29	476.60	424.39	370.76	401.72	430.21	423.32
2016	345.01	326.39	325.66	342.05	366.15	355.48	389.06	378.89	385.50	340.52	369.37	372.46
2017	391.88	436.08	454.95	456.28	415.30	455.96	449.05	468.44	473.40	468.37	491.88	

IC1 (EUR) PERFORMANCE %. NET OF FEES													
YEAR	JAN	FEB	MAR	APR	MAY	JUN	JUL	AUG	SEP	OCT	NOV	DEC	TOTAL
2009						0.75	4.41	2.17	0.33	-6.34	4.66	7.17	13.28
2010	4.09	1.72	6.33	-4.09	-11.10	-2.14	-3.35	-0.20	7.13	2.01	3.58	5.65	8.34
2011	-0.98	2.26	-0.75	3.60	5.05	-3.71	-0.83	-6.89	-0.90	6.25	1.44	5.58	9.66
2012	5.82	1.10	3.83	0.52	-0.15	6.00	1.05	0.00	2.94	-5.16	2.81	-1.50	18.08
2013	6.29	5.44	7.75	3.39	5.39	-3.14	11.52	-0.98	4.38	-3.34	9.31	0.05	55.29
2014	6.94	5.01	-5.34	-5.54	5.32	5.32	0.50	7.45	2.43	7.28	3.83	4.08	42.83
2015	11.02	7.15	6.99	-6.16	10.08	-1.54	4.45	-10.95	-12.64	8.35	7.09	-1.60	20.10
2016	-18.50	-5.40	-0.22	5.03	7.05	-2.91	9.45	-2.61	1.74	-11.67	8.47	0.84	-12.01
2017	5.21	11.28	4.33	0.29	-8.98	9.79	-1.52	4.32	1.06	-1.06	5.02		32.06

IC2 (SEK) NAV												
YEAR	JAN	FEB	MAR	APR	MAY	JUN	JUL	AUG	SEP	OCT	NOV	DEC
2013	105.95	109.53	117.11	123.34	131.02	128.83	142.56	142.09	147.55	144.39	159.03	158.77
2014	169.27	178.14	170.53	162.83	172.56	182.30	184.56	197.44	201.10	218.77	227.47	240.91
2015	264.32	283.76	300.86	285.57	313.96	305.90	326.08	292.97	252.07	273.89	288.10	281.94
2016	232.96	221.76	219.09	228.93	248.02	243.80	270.79	263.91	270.85	245.87	263.97	260.88
2017	270.49	305.07	315.32	318.79	292.29	318.16	310.91	322.70	331.45	331.49	352.83	

IC2 (SEK) PERFORMANCE %. NET OF FEES													
YEAR	JAN	FEB	MAR	APR	MAY	JUN	JUL	AUG	SEP	OCT	NOV	DEC	TOTAL
2013	5.95	3.38	6.92	5.32	6.23	-1.67	10.66	-0.33	3.84	-2.14	10.14	-0.16	58.77
2014	6.61	5.24	-4.27	-4.52	5.98	5.64	1.24	6.98	1.85	8.79	3.98	5.91	51.74
2015	9.72	7.35	6.03	-5.08	9.94	-2.57	6.60	-10.15	-13.96	8.66	5.19	-2.14	17.03
2016	-17.37	-4.81	-1.20	4.49	8.34	-1.70	11.07	-2.54	2.63	-9.22	7.36	-1.17	-7.47
2017	3.68	12.78	3.36	1.10	-7.69	8.11	-2.28	3.79	2.71	0.01	6.44		35.25

IC1 (USD) NAV												
YEAR	JAN	FEB	MAR	APR	MAY	JUN	JUL	AUG	SEP	OCT	NOV	DEC
2015		106.43	109.37	107.12	114.84	114.48	118.78	107.70	93.74	100.50	102.88	104.09
2016	84.51	80.27	84.02	88.68	92.24	89.25	98.50	95.48	98.04	84.48	88.63	88.85
2017	95.78	104.78	110.08	112.50	105.65	116.97	118.72	124.26	125.01	121.84	130.74	

IC1 (USD) PERFORMANCE %. NET OF FEES													
YEAR	JAN	FEB	MAR	APR	MAY	JUN	JUL	AUG	SEP	OCT	NOV	DEC	TOTAL
2015		6.43	2.76	-2.06	7.21	-0.31	3.76	-9.33	-12.96	7.21	2.37	1.18	4.09
2016	-18.81	-5.02	4.67	5.55	4.01	-3.24	10.36	-3.07	2.68	-13.83	4.91	0.25	-14.64
2017	7.80	9.40	5.06	2.20	-6.09	10.71	1.50	4.67	0.60	-2.54	7.30		47.15

IC2 (USD) NAV												
YEAR	JAN	FEB	MAR	APR	MAY	JUN	JUL	AUG	SEP	OCT	NOV	DEC
2014					102.92	108.60	106.82	113.71	112.69	120.10	124.21	126.40
2015	132.75	141.32	145.96	143.02	153.38	152.95	158.76	143.26	124.74	133.79	137.03	138.70
2016	112.66	107.07	112.12	118.40	123.21	119.27	131.69	127.71	131.20	113.12	118.73	119.08
2017	128.42	140.54	147.72	151.02	141.89	156.98	159.38	166.89	167.94	163.77	175.76	

IC2 (USD) PERFORMANCE %. NET OF FEES													
YEAR	JAN	FEB	MAR	APR	MAY	JUN	JUL	AUG	SEP	OCT	NOV	DEC	TOTAL
2014					2.92	5.52	-1.64	6.45	-0.90	6.58	3.42	1.76	26.40
2015	5.02	6.46	3.28	-2.01	7.24	-0.28	3.80	-9.76	-12.93	7.26	2.42	1.22	9.73
2016	-18.77	-4.96	4.72	5.60	4.06	-3.20	10.41	-3.02	2.73	-13.78	4.96	0.29	-14.15
2017	7.84	9.44	5.11	2.23	-6.05	10.63	1.53	4.71	0.63	-2.48	7.32		47.60

IC3 (EUR) NAV												
YEAR	JAN	FEB	MAR	APR	MAY	JUN	JUL	AUG	SEP	OCT	NOV	DEC
2009								102.15	103.33	96.78	101.30	109.19
2010	114.20	116.43	124.73	119.62	106.33	104.06	100.57	100.37	107.52	109.68	113.59	120.00
2011	118.82	121.50	120.59	124.92	131.89	126.43	125.36	116.73	115.66	122.76	124.53	132.03
2012	140.67	142.42	148.58	149.43	149.16	159.24	161.09	161.06	166.38	157.79	162.21	159.79
2013	170.25	180.70	196.39	203.85	216.23	208.50	235.66	233.03	244.50	236.34	260.09	260.40
2014	280.76	296.58	279.47	263.97	278.02	294.48	296.09	321.00	329.83	356.89	372.31	389.50
2015	437.99	471.80	508.68	477.10	527.32	518.14	544.00	481.68	420.82	455.95	488.29	480.47
2016	391.59	370.46	369.62	388.23	415.58	403.47	441.58	430.05	437.55	386.50	419.24	422.75
2017	444.79	494.96	516.44	518.14	471.42	517.72	509.84	533.67	539.99	534.17	563.68	

IC3 (EUR) PERFORMANCE %. NET OF FEES													
YEAR	JAN	FEB	MAR	APR	MAY	JUN	JUL	AUG	SEP	OCT	NOV	DEC	TOTAL
2009								2.15	1.16	-6.34	4.67	7.79	9.19
2010	4.59	1.95	7.13	-4.10	-11.11	-2.13	-3.35	-0.20	7.12	2.01	3.56	5.64	9.90
2011	-0.98	2.26	-0.75	3.59	5.58	-4.14	-0.85	-6.88	-0.92	6.14	1.44	6.02	10.03
2012	6.54	1.24	4.33	0.57	-0.18	6.76	1.16	-0.02	3.30	-5.16	2.80	-1.49	21.03
2013	6.55	6.14	8.68	3.80	6.07	-3.57	13.03	-1.12	4.92	-3.34	10.05	0.12	62.96
2014	7.82	5.63	-5.77	-5.55	5.32	5.92	0.55	8.41	2.75	8.20	4.32	4.62	49.58
2015	12.45	7.72	7.82	-6.21	10.53	-1.74	4.99	-11.46	-12.63	8.35	7.09	-1.60	23.36
2016	-18.50	-5.40	-0.23	5.03	7.04	-2.91	9.45	-2.61	1.74	-11.67	8.47	0.84	-12.01
2017	5.21	11.28	4.34	0.33	-9.02	9.82	-1.52	4.67	1.18	-1.08	5.52		33.34

ID1 (SEK) NAV												
YEAR	JAN	FEB	MAR	APR	MAY	JUN	JUL	AUG	SEP	OCT	NOV	DEC
2012					100.64	104.51	101.00	100.77	105.42	101.93	105.47	103.07
2013	109.66	109.21	116.69	122.83	130.33	127.88	141.46	140.87	146.24	143.04	157.52	157.19
2014	167.54	168.39	161.54	154.18	163.36	172.51	174.59	186.71	190.10	206.73	214.90	227.49
2015	249.52	256.41	271.30	257.41	282.93	275.68	293.76	263.61	226.72	246.24	258.91	253.27
2016	209.19	186.39	184.08	192.27	208.21	204.58	227.14	221.28	227.01	205.99	221.08	218.41
2017	226.36	247.58	257.17	259.92	239.81	259.22	253.21	262.73	269.78	269.72	287.00	

ID1 (SEK) PERFORMANCE %. NET OF FEES													
YEAR	JAN	FEB	MAR	APR	MAY	JUN	JUL	AUG	SEP	OCT	NOV	DEC	TOTAL
2012					0.64	3.85	-3.36	-0.23	4.61	-3.31	3.47	-2.28	3.07
2013	6.39	-0.41	6.85	5.26	6.11	-1.88	10.62	-0.42	3.81	-2.19	10.12	-0.21	52.51
2014	6.58	0.51	-4.07	-4.56	5.95	5.60	1.21	6.94	1.82	8.75	3.95	5.86	44.72
2015	9.68	2.76	5.81	-5.12	9.91	-2.56	6.56	-10.26	-13.99	8.61	5.15	-2.18	11.33
2016	-17.40	-10.90	-1.24	4.45	8.29	-1.74	11.03	-2.58	2.59	-9.26	7.33	-1.21	-13.76
2017	3.64	9.37	3.87	1.07	-7.74	8.09	-2.32	3.76	2.68	-0.02	6.41		31.40

RC1 (EUR) NAV												
YEAR	JAN	FEB	MAR	APR	MAY	JUN	JUL	AUG	SEP	OCT	NOV	DEC
2010									104.35	104.75	110.36	115.32
2011	114.18	116.50	115.79	119.40	125.10	120.47	119.15	110.91	109.86	116.68	118.31	124.92
2012	132.14	133.59	138.66	139.34	139.09	147.39	148.89	148.83	153.16	145.20	149.21	146.92
2013	156.14	164.59	177.28	183.22	192.89	185.65	206.96	204.86	212.69	205.49	224.58	224.79
2014	240.30	251.66	236.42	223.21	235.00	247.45	248.60	266.95	273.34	293.13	304.24	315.14
2015	349.47	373.47	398.19	373.48	411.03	404.45	422.31	375.75	328.13	355.37	380.41	374.15
2016	304.81	288.23	287.45	301.80	322.91	313.37	342.82	333.71	339.38	299.66	324.90	327.48
2017	344.40	383.08	399.53	400.83	364.36	400.14	393.87	411.29	415.46	410.84	431.35	

RC1 (EUR) PERFORMANCE %. NET OF FEES													
YEAR	JAN	FEB	MAR	APR	MAY	JUN	JUL	AUG	SEP	OCT	NOV	DEC	TOTAL
2010									4.35	0.38	5.36	4.49	15.32
2011	-0.99	2.03	-0.61	3.12	4.77	-3.70	-1.10	-6.92	-0.95	6.21	1.40	5.59	8.32
2012	5.78	1.10	3.80	0.49	-0.18	5.97	1.02	-0.04	2.91	-5.20	2.76	-1.53	17.61
2013	6.28	5.41	7.71	3.35	5.28	-3.75	11.48	-1.01	3.82	-3.39	9.29	0.09	53.00
2014	6.90	4.73	-6.06	-5.59	5.28	5.30	0.46	7.38	2.39	7.24	3.80	3.58	40.19
2015	10.89	6.87	6.62	-6.21	10.05	-1.60	4.42	-11.03	-12.67	8.30	7.05	-1.65	18.73
2016	-18.53	-5.44	-0.27	4.99	6.99	-2.95	9.40	-2.66	1.70	-11.70	8.42	0.79	-12.47
2017	5.17	11.23	4.29	0.33	-9.10	9.82	-1.57	4.42	1.01	-1.11	4.99		31.72

RC1 (SEK) NAV												
YEAR	JAN	FEB	MAR	APR	MAY	JUN	JUL	AUG	SEP	OCT	NOV	DEC
2009						99.74	99.92	101.00	101.51	96.72	101.85	106.75
2010	110.70	108.05	115.09	109.18	96.69	93.87	89.69	88.93	93.37	96.59	98.29	102.16
2011	98.91	100.22	101.80	105.28	111.04	109.04	107.03	100.09	100.29	104.24	106.42	111.05
2012	118.78	118.87	123.79	125.05	125.79	130.61	126.17	125.85	131.65	127.25	131.60	128.55
2013	136.76	141.24	150.89	158.78	168.47	165.25	182.72	181.89	188.61	184.41	203.02	202.38
2014	215.63	226.61	216.26	206.33	218.55	230.73	233.43	249.55	253.98	276.09	286.74	302.97
2015	332.20	356.11	376.45	357.02	392.32	381.98	406.89	365.09	313.86	340.74	358.11	350.16
2016	289.10	274.97	271.43	283.40	306.76	301.29	334.38	325.60	333.90	302.85	324.90	320.85
2017	332.37	374.59	388.12	392.14	361.60	390.79	381.55	395.80	406.28	406.01	431.88	

RC1 (SEK) PERFORMANCE % NET OF FEES													
YEAR	JAN	FEB	MAR	APR	MAY	JUN	JUL	AUG	SEP	OCT	NOV	DEC	TOTAL
2009						-0.26	0.18	1.08	0.50	-4.72	5.30	4.81	6.75
2010	3.70	-2.39	6.52	-5.14	-11.44	-2.92	-4.45	-0.85	4.99	3.45	1.76	3.94	-4.30
2011	-3.18	1.32	1.58	3.42	5.47	-1.80	-1.84	-6.48	0.20	3.94	2.09	4.35	8.70
2012	6.96	0.08	4.14	1.02	0.59	3.83	-3.40	-0.25	4.61	-3.34	3.42	-2.32	15.76
2013	6.39	3.28	6.83	5.23	6.10	-1.91	10.57	-0.45	3.69	-2.23	10.09	-0.32	57.43
2014	6.55	5.09	-4.57	-4.59	5.92	5.57	1.17	6.91	1.78	8.71	3.86	5.66	49.70
2015	9.65	7.20	5.71	-5.16	9.89	-2.64	6.52	-10.27	-14.03	8.56	5.10	-2.22	15.58
2016	-17.44	-4.89	-1.29	4.41	8.24	-1.78	10.98	-2.63	2.55	-9.30	7.28	-1.25	-8.37
2017	3.59	12.70	3.61	1.04	-7.79	8.07	-2.36	3.73	2.65	-0.07	6.37		34.60

RC2 (SEK) NAV												
YEAR	JAN	FEB	MAR	APR	MAY	JUN	JUL	AUG	SEP	OCT	NOV	DEC
2009						99.74	99.98	101.12	101.68	96.94	102.10	107.07
2010	111.07	108.57	115.69	109.78	97.28	94.47	90.31	89.58	94.10	97.38	99.14	103.08
2011	99.84	101.20	102.84	106.40	112.28	110.30	108.32	101.33	101.58	105.64	107.89	112.63
2012	120.30	120.44	125.51	126.83	127.66	132.58	128.13	127.86	133.77	129.36	133.84	130.80
2013	139.17	143.74	153.48	161.57	171.53	167.92	185.74	185.04	192.06	187.86	206.87	206.39
2014	219.98	231.28	221.05	210.98	223.54	236.05	238.90	255.47	260.24	283.00	293.97	310.92
2015	341.02	365.80	386.77	366.96	403.34	392.85	418.61	375.87	323.26	351.09	369.14	361.10
2016	298.25	283.80	280.26	292.73	317.00	311.48	345.83	336.89	345.62	313.62	336.59	332.52
2017	344.62	388.54	402.06	406.34	374.90	405.23	395.81	410.70	421.71	421.61	448.59	

RC2 (SEK) PERFORMANCE % NET OF FEES													
YEAR	JAN	FEB	MAR	APR	MAY	JUN	JUL	AUG	SEP	OCT	NOV	DEC	TOTAL
2009						-0.26	0.24	1.14	0.55	-4.66	5.32	4.87	7.07
2010	3.74	-2.25	6.56	-5.11	-11.39	-2.89	-4.40	-0.81	5.05	3.49	1.81	3.97	-3.73
2011	-3.14	1.36	1.62	3.46	5.53	-1.76	-1.80	-6.45	0.25	4.00	2.13	4.39	9.26
2012	6.81	0.12	4.21	1.05	0.65	3.85	-3.36	-0.21	4.62	-3.30	3.46	-2.27	16.13
2013	6.40	3.28	6.78	5.27	6.16	-2.10	10.61	-0.38	3.79	-2.19	10.12	-0.23	57.79
2014	6.58	5.14	-4.42	-4.56	5.95	5.60	1.21	6.94	1.87	8.75	3.88	5.77	50.65
2015	9.68	7.27	5.73	-5.12	9.91	-2.60	6.56	-10.21	-14.00	8.61	5.14	-2.18	16.14
2016	-17.41	-4.84	-1.25	4.45	8.29	-1.74	11.03	-2.59	2.59	-9.26	7.32	-1.21	-7.91
2017	3.64	12.74	3.48	1.06	-7.74	8.09	-2.32	3.76	2.68	-0.02	6.40		34.91

## ABOUT RHENMAN & PARTNERS

Rhenman & Partners Asset Management, founded in 2008, is a Stockholm-based investment manager focusing on two niche funds: Rhenman Healthcare Equity L/S, founded in 2009, and Rhenman Global Opportunities L/S, founded in 2016. Assets under management amount to approximately EUR 500m. Investment Teams of both Funds are in their investment processes supported by renowned Advisory Boards, including professors and experts with many years of market experience and extensive networks around the world.

## LEGAL DISCLAIMER

Rhenman Healthcare Equity L/S. "The Fund" is not an investment fund as defined in the European Union directives relating to undertakings for collective investment in transferable securities (UCITS). Legal information regarding Fund is contained in the Prospectus and the KIID, available at Rhenman & Partners Asset Management AB (Rhenman & Partners) webpage: <http://rhepa.com/the-fund/prospectus/>.

This material has been prepared by Rhenman & Partners for professional and non-professional investors. Rhenman & Partners when preparing this information has not taken into account any one customer's particular investment objectives, financial resources or other relevant circumstances and the opinions and recommendations herein are not intended to represent recommendations of particular investments to particular customers. This material is for informational purposes only and should not be construed as an offer or solicitation to sell or buy units of the Fund. Investors is strongly recommended to get professional advice as to whether investment in the Fund is appropriate having regard to their particular investment needs, objectives and financial circumstances, before investing.

All securities' transactions involve risks, which include (among others) the risk of adverse or unanticipated market, financial or political developments and, in international transactions, currency risk. There can be no assurance that an investment in the Fund will achieve profits or avoid incurring substantial losses. There is a high degree of risk inherent in investments and they may not be suitable for all eligible investors. It is possible that an investor may lose some or all of its investment. The past is not necessarily a guide to the future performance of an investment. The value of investments may fall as well as rise and investors may not get back the amount invested. Changes in rates of foreign exchange may cause the value of investments to go up or down.

Before making an investment decision, an investor and/or its adviser should (i) consider the suitability of investments in the Fund with respect to its investment objectives and personal situation and (ii) consider factors such as its personal net worth, income, age, risk tolerance and liquidity needs. Short-term investors and investors who cannot bear the loss of some or all of their investment or the risks associated with the limited liquidity of an investment should not invest.

Due care and attention has been used in the preparation of this information. However, actual results may vary from their forecasts, and any variation may be materially positive or negative. Forecasts, by their very nature, are subject to uncertainty and contingencies, many of which are outside the control of Rhenman & Partners. Rhenman & Partners cannot guarantee that the information contained herein is without fault or entirely accurate. There may be delays, omissions or inaccuracies in the information. Any dated information is published as of its date only and no obligation or responsibility is undertaken to update or amend any such information.

The information in this material is based on sources that Rhenman & Partners believes to be reliable. Rhenman & Partners can however not guarantee that all information is correct. Furthermore, information and opinions may change without notice. Rhenman & Partners is under no obligation to make amendments or changes to this publication if errors are found or opinions or information change. Rhenman & Partners accepts no responsibility for the accuracy of its sources.

Rhenman & Partners is the owner of all works of authorship including, but not limited to, all design text, images and trademarks in this material unless otherwise explicitly stated. The use of Rhenman & Partners' material, works or trademarks is forbidden without written consent except where otherwise expressly stated. Furthermore, it is prohibited to publish material made or gathered by Rhenman & Partners without written consent.

By accessing and using the <http://rhepa.com/> website and any pages thereof, you acknowledge that you have reviewed the following important legal information and understand and agree to the terms and conditions set therein. If you do not agree to the terms and conditions in this disclaimer, do not access or use <http://rhepa.com/website> in any way.

Products and services described herein are not available to all persons in all geographical locations. Rhenman & Partner will not provide any such products or services to any person if the provision of such services could be in violation of law or regulation in such person's home country jurisdiction or any other related jurisdiction. The units of the Fund may not be offered or sold to or within the United States or in any other country where such offer or sale would conflict with applicable laws or regulations.

In no event, including (but not limited to) negligence, will Rhenman & Partner be liable to you or anyone else for any consequential, incidental, special or indirect damages (including but not limited to lost profits, trading losses and damages).

The sole legally binding basis for the purchase of shares of the Fund described in this information is the latest valid sales prospectus with its terms of contract. Subscriptions cannot be received on the basis of financial reports.

An investment in the Fund does not represent deposits or other liabilities of any member of the Rhenman & Partners Group. Neither Rhenman & Partners nor any member of the Rhenman & Partners Group and its affiliates guarantees in any way the performance of the Fund, repayment of capital from the Fund, any particular return from or any increase in the value of the Fund.

# SUBSCRIBE TO OUR MONTHLY NEWSLETTER AT [WWW.RHEPA.COM](http://WWW.RHEPA.COM)

### CONTACT DETAILS

Rhenman & Partners  
Asset Management AB  
Strandvägen 5A  
114 51 Stockholm, Sweden  
Tel + 46 8 459 88 80  
[info@rhepa.com](mailto:info@rhepa.com)

*International investors (non Swedish):*  
Carl Grevelius  
Head of Investor Relations  
Tel + 46 8 459 88 83  
[carl@rhepa.com](mailto:carl@rhepa.com)

*Swedish investors:*  
Anders Grelsson  
Swedish Investor Relations  
Mob + 46 70 374 43 20  
[anders@rhepa.com](mailto:anders@rhepa.com)

[WWW.RHEPA.COM](http://WWW.RHEPA.COM)