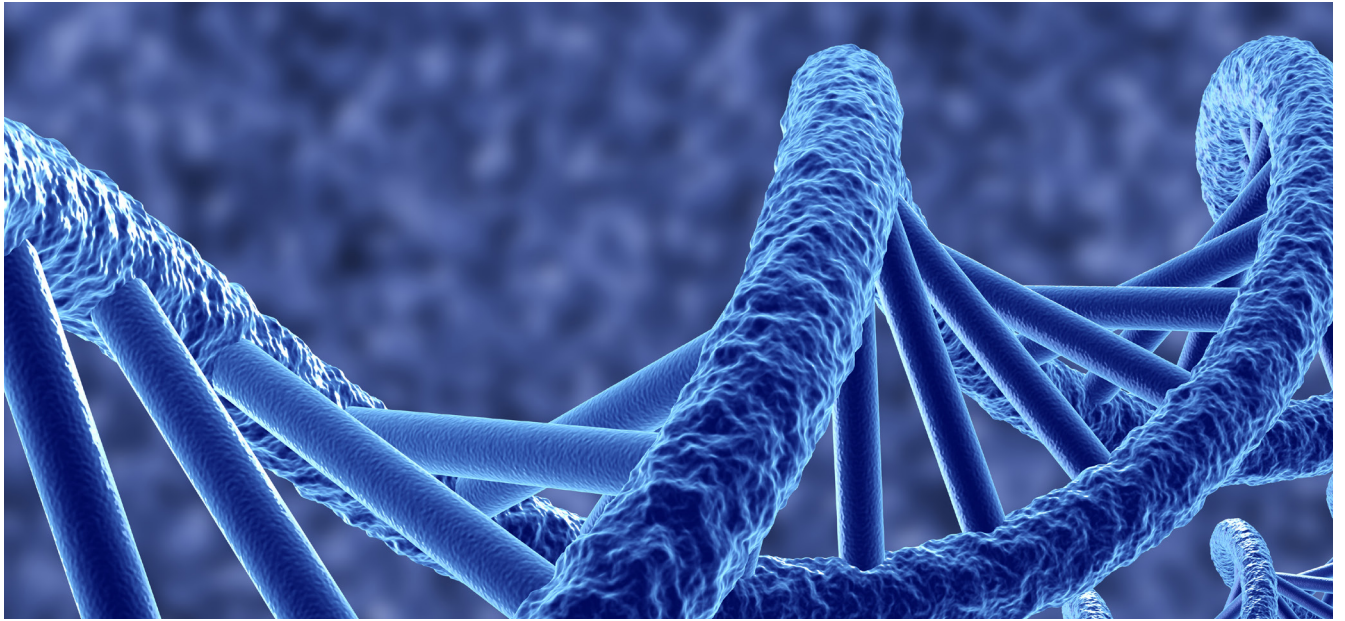


JANUARY 2018



# RHENMAN HEALTHCARE EQUITY L/S

## OUTSTANDING LONG-TERM PERFORMANCE IN A COMPLEX MARKET

- Annualised return of 22 % (net) since inception.
- Over 20 years managing successful healthcare funds.
- World renowned industry professionals each with over 30 years experience actively involved through the Scientific Advisory Board.
- Unquestionable alpha generation. outperforming all relevant indices and top quartile in all relevant rankings.
- Long term investment horizon:
  - Diversified across subsectors. company size and geographies to lower volatility.
  - Active trading around holdings.
  - Predominantly cash flow positive companies.
  - Typically investing post approval, mitigating event risk.

### MONTHLY UPDATE

The month of January started out on a high note of optimism stemming from the US tax reform, positive developments in several of the major world economies and expectations on favorable quarterly corporate results. However, there was a decline in the US dollar as well as a rise in bond rates.

Falling out of the spotlight during all of this were the trouble spots that have at times plagued capital markets during the last year, e.g. Brexit, North Korea, the Catalan independence movement and the unrelenting criticism of the Trump administration. The first year-end reports that came in were positive, particularly in the US, where the overwhelming majority of companies released reports that exceeded expectations. Earnings were up and forecasts revised upwards thanks to the positive effects of tax reform, healthy demand in many markets and stronger margins.

At the end of the month, however, stock prices declined with the rise in interest rates. January was the worst month that bondholders have experienced in several years and the yield of the US 10-year Treasury bond surged to just over 2.8 percent – the highest it has been in four years.

Measured in EUR, the world index rose by 2.2 percent. IT and consumer discretionary were at the head of the pack. At the other end of the spectrum were consumer staples and the energy sector. Healthcare rose in line with the world index.

### FUND PERFORMANCE

Measured in its main share class IC1 (EUR), the fund rose by 6.89 percent.

*Continued on the next page* ➤

Ablynx, Nektar Therapeutics and Iovance Biotherapeutics were the best contributors during the month. The worst contributors were Roche, Puma Biotechnology and Endologix.

Ablynx is a Belgian biopharmaceutical company engaged in the development of nanobodies, which are proprietary therapeutic proteins based on single-domain antibody fragments that contain the unique structural and functional properties of naturally-occurring heavy chain antibodies. Early in January, Novo Nordisk made an unsolicited bid of EUR 3.1 bn on Ablynx. The offer was rejected by Ablynx's board of directors on the grounds that it fundamentally undervalued the company. However, at the end of the month, it was announced that Sanofi would acquire Ablynx for EUR 4.8 bn, which corresponds to a premium of 112% compared to the valuation at the time of the first bid from Novo Nordisk.

Nektar Therapeutics is an American biopharmaceutical company that is developing a new immuno-oncology drug, NKTR-214, to treat solid tumors. The company is a world leader in PEGylation technology. Using this method, the toxicity of interleukin-2 cancer treatment is modulated to optimize the product's effect and minimize its side effects. The company has been announcing increasingly promising results from clinical trials on possible synergies with cancer immunotherapies targeting the PD-1 signaling pathway. In fact, the side effect profile might even be better than PD-1 inhibitor monotherapy, which, if confirmed in pivotal studies, would be truly sensational. The company should now be regarded as a possible acquisition target due to the high level of interest and attention that NKTR-214 is attracting.

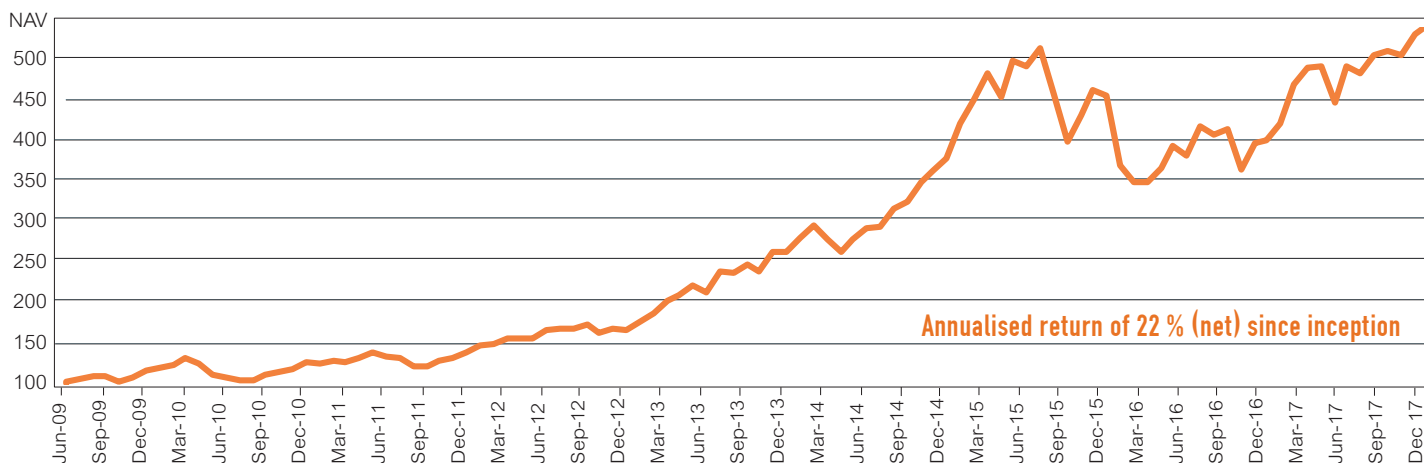
Iovance Biotherapeutics is a biotechnology company developing and commercializing cancer immunotherapy that harnesses the power of a patient's own immune system to eradicate cancer cells.

The technology is based on harvesting and enhancing the patients' own Tumor Infiltrating Lymphocytes (TILs) and has the potential to become an important supplement to other immunological treatments. It works like this: TILs are extracted from the patient and increased in number by billions by stimulating them ex vivo. Once sufficient numbers of cells with the appropriate anti-tumor potential have been cultured, they are then re-administered back into the donor patient. In January, the company announced preliminary phase 2 data for TIL treatment with its "drug candidate", LN-145, in head and neck and cervical cancers. The company's stock price rose following publication of those latest results.

Roche, the European pharmaceutical company, is facing the daunting task of maintaining growth in both sales and profits by launching new products at a time when sales of its existing products are faltering, driven by competition from biosimilars. Uncertainty about the company's ability to successfully make this transformation, along with a further weakening of the USD, caused a drop in its stock price during the month.

Puma Biotechnology is a US pharmaceutical company that is developing novel therapeutics for the treatment of cancer. In clinical studies, Neratinib, the company's most advanced drug candidate, has proved to be effective in the treatment of breast cancer and potentially also gastric cancer. The product was launched in the US market in 2017 for the treatment of HER2-positive breast cancer and the company has also applied for approval of Neratinib in Europe. The company suffered a setback in January, however, when the Scientific Advisory Group for the European Medicines Agency (EMA) preliminarily voted against approval, which caused the company's stock price to fall. The company is now evaluating various alternatives to ensure the approval of Neratinib in Europe.

## FUND PERFORMANCE - IC1 (EUR)



## JANUARY 2018

SHARE CLASS	NAV	MONTHLY RETURN	YTD 2018	SINCE INCEPTION <sup>1</sup>
IC1 (EUR)	535.61	6.89%	6.89%	435.61%
IC3 (EUR)	620.04	7.76%	7.76%	520.04%
IC2 (SEK)	379.63	6.54%	6.54%	279.63%
ID1 (SEK)	308.23	6.50%	6.50%	208.23%
IC1 (USD)	147.42	10.06%	10.06%	47.42%
IC2 (USD)	198.33	10.11%	10.11%	98.33%
RC1 (EUR)	469.64	6.85%	6.85%	369.64%
RC1 (SEK)	464.01	6.45%	6.45%	364.01%
RC2 (SEK)	482.21	6.50%	6.50%	382.21%
3 month Euribor (EUR)	103.24	-0.03%	-0.03%	3.24%

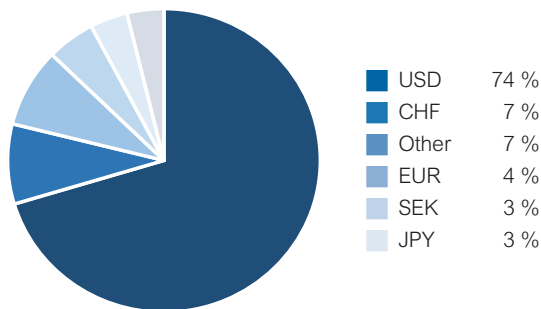
Notes: <sup>1</sup> Please find launch date information on page 4 and 6.

Endologix is an American-based company in the medtech sector. The company is singularly focused on providing innovative, minimally invasive technologies for the treatment of aortic aneurism. Last year, Endologix was hit by a number of setbacks that lowered its sales. The prospects for sales growth in 2018 are uncertain, which explains the company's weak stock price during the period.

#### FORECAST

The fund's performance got off to a great start in January and the outlook for the sector for the rest of 2018 is promising. Tax reform in the US, new acquisitions, a steady flow of positive news from clinical trials and strong sales trends in the worldwide pharmaceutical market are creating high expectations and the outlook is for a continued rise in stock prices. But there are reasons for being more cautious than in the past. With the upcoming midterm elections in the US, the spotlight could, once again, be on healthcare and the potential use of government regulations to radically reduce prescription drug prices. Valuations are presently on a par with the same time last year, but interest rates are definitely on the rise due to booming economies. With that in mind, the fund has decided to take a slight step back in terms of its risk level. The aim is to slightly lower net exposure during the year compared to 2017 and to strive to marginally increase the proportion of large companies. Despite these precautionary measures, we should still be prepared for more volatility in this sector during the coming year. However, this environment will also create interesting trading opportunities for the fund. ■

#### CURRENCY EXPOSURE<sup>2</sup>



#### EXPOSURE<sup>4</sup>

Long	148 %
Short	24 %
Gross	172 %
Net	123 %

#### RISK (IC1 EUR)

Value at risk <sup>5</sup>	2.37 %
Standard Deviation <sup>6</sup>	20.17 %
Sharpe Ratio <sup>6</sup>	1.05

#### SHARE CLASS CHARACTERISTICS – INSTITUTIONAL SHARE CLASSES (ONLY INSTITUTIONAL INVESTORS)<sup>8</sup>

	MINIMUM INVESTMENT	MGT. FEE	PERF. FEE	ISIN NUMBER	BLOOMBERG TICKER	LIPPER REUTERS	TELEKURS
IC1 (EUR)	250,000	1.50 %	20 %	LU0417598108	RHLEIC1 LX	65147588	10034579
IC3 (EUR)	5,000,000	1.50 %	10 %	LU0434614789	RHHIC3 LX	68014068	10283697
IC2 (SEK)	50,000,000	1.00 %	20 %	LU0417598793	RHHIC2S LX	68204997	20323930
ID1 (SEK)	100,000	1.50 %	20 %	LU0417599098	RHHCID1 LX	68153820	18491109
IC1 (USD)	300,000	1.50 %	20 %	LU0417598280	RHUIC1A LX	68305812	26812813
IC2 (USD)	6,000,000	1.00 %	20 %	LU0417598520	RHUIC2U LX	68265724	24456000

#### SHARE CLASS CHARACTERISTICS – RETAIL SHARE CLASSES (ALSO OPEN TO INSTITUTIONAL INVESTORS)<sup>8</sup>

RC1 (EUR)	2,500	2.00 %	20 %	LU0417597555	RHLERC1 LX	65147589	10034567
RC1 (SEK)	500	2.00 %	20 %	LU0417597712	RHLSRC1 LX	68014067	10239523
RC2 (SEK)	2,500,000	1.50 %	20 %	LU0417598017	RHLSRC2 LX	68015239	10239528

Notes: <sup>2</sup> As a percentage of the market value of the long and short positions (excluding cash positions). <sup>3</sup> Number of long equity positions (excluding any ETFs). <sup>4</sup> The exposure is adjusted for net fund flow at month end. <sup>5</sup> For holdings at month end (95 % conf. int. 250 days history). <sup>6</sup> Standard deviation and Sharpe ratio are annualized. <sup>7</sup> The AUM is adjusted for net fund flow at month end. <sup>8</sup> Administrative fees are charged in addition to the fees above. Further information is available in the KIID as well as the prospectus (part B. A14-18).

## FUND CHARACTERISTICS

#### KIID AND PROSPECTUS (WEBPAGE)

<http://fundinfo.sebfundservices.lu/RhenmanPartnersFund/>

#### AIFM / MANAGEMENT COMPANY

SEB Fund Services S.A.

#### PRIME BROKER

Skandinaviska Enskilda Banken AB (publ)

#### INVESTABLE CURRENCIES

Euro (EUR) / Swedish Krona (SEK) / US Dollar (USD)

#### DEPOSITARY AND PAYING AGENT

Skandinaviska Enskilda Banken S.A.

#### TARGET FUND SIZE

EUR 1bn (hard close)

#### RETURN TARGET

Annualised net returns in excess of 12% over time

#### AUDITOR

PricewaterhouseCoopers (PwC)

#### LEGAL STRUCTURE

AIF / FCP (Fonds Commun de Placement) under Part II of the Luxembourg Law on Investment Funds

#### SUBSCRIPTION / REDEMPTION

Monthly

#### PORTFOLIO MANAGER

Rhenman & Partners Asset Management AB

#### MINIMUM TOP UP

No minimum

#### INVESTMENT TEAM

Henrik Rhenman & Susanna Urdmark

#### NOTICE PERIOD

3 working days

#### HURDLE RATE

Euribor 90D (high-water mark)

#### PORTFOLIO CONSTRUCTION<sup>3</sup>

PYRAMID LEVEL	POSITION SIZE	NO.
High conviction	3 %-10 %	8
Core holdings	1 %-3 %	50
Fractional positions	0.5 %-1 %	29
Candidate holdings	0 %-0.5 %	30

#### AUM<sup>7</sup>

Fund:
EUR 556m
USD 692m
Firm:
EUR 570m

#### LARGEST LONG POSITIONS

1 Roche Holding Ltd
2 Nektar Therapeutics
3 Horizon Pharma Plc
4 Esperion Therapeutics Inc
5 Vertex Pharmaceuticals Inc

## HISTORICAL RETURNS AND NAVS

IC1 (EUR) NAV												
YEAR	JAN	FEB	MAR	APR	MAY	JUN	JUL	AUG	SEP	OCT	NOV	DEC
2009						100.75	105.19	107.47	107.83	100.99	105.70	113.28
2010	117.91	119.94	127.53	122.31	108.73	106.40	102.84	102.63	109.95	112.16	116.17	122.73
2011	121.53	124.28	123.35	127.79	134.24	129.26	128.19	119.36	118.28	125.67	127.48	134.59
2012	142.42	143.99	149.51	150.29	150.07	159.07	160.74	160.74	165.47	156.93	161.34	158.92
2013	168.92	178.11	191.91	198.41	209.10	202.53	225.87	223.66	233.45	225.66	246.67	246.79
2014	263.91	277.13	262.34	247.80	260.99	274.87	276.25	296.82	304.03	326.16	338.66	352.48
2015	391.34	419.34	448.65	421.01	463.44	456.29	476.60	424.39	370.76	401.72	430.21	423.32
2016	345.01	326.39	325.66	342.05	366.15	355.48	389.06	378.89	385.50	340.52	369.37	372.46
2017	391.88	436.08	454.95	456.28	415.30	455.96	449.05	468.44	473.40	468.37	491.88	501.07
2018	535.61											

IC1 (EUR) PERFORMANCE % NET OF FEES													
YEAR	JAN	FEB	MAR	APR	MAY	JUN	JUL	AUG	SEP	OCT	NOV	DEC	TOTAL
2009						0.75	4.41	2.17	0.33	-6.34	4.66	7.17	13.28
2010	4.09	1.72	6.33	-4.09	-11.10	-2.14	-3.35	-0.20	7.13	2.01	3.58	5.65	8.34
2011	-0.98	2.26	-0.75	3.60	5.05	-3.71	-0.83	-6.89	-0.90	6.25	1.44	5.58	9.66
2012	5.82	1.10	3.83	0.52	-0.15	6.00	1.05	0.00	2.94	-5.16	2.81	-1.50	18.08
2013	6.29	5.44	7.75	3.39	5.39	-3.14	11.52	-0.98	4.38	-3.34	9.31	0.05	55.29
2014	6.94	5.01	-5.34	-5.54	5.32	5.32	0.50	7.45	2.43	7.28	3.83	4.08	42.83
2015	11.02	7.15	6.99	-6.16	10.08	-1.54	4.45	-10.95	-12.64	8.35	7.09	-1.60	20.10
2016	-18.50	-5.40	-0.22	5.03	7.05	-2.91	9.45	-2.61	1.74	-11.67	8.47	0.84	-12.01
2017	5.21	11.28	4.33	0.29	-8.98	9.79	-1.52	4.32	1.06	-1.06	5.02	1.87	34.53
2018	6.89												6.89

IC2 (SEK) NAV												
YEAR	JAN	FEB	MAR	APR	MAY	JUN	JUL	AUG	SEP	OCT	NOV	DEC
2013	105.95	109.53	117.11	123.34	131.02	128.83	142.56	142.09	147.55	144.39	159.03	158.77
2014	169.27	178.14	170.53	162.83	172.56	182.30	184.56	197.44	201.10	218.77	227.47	240.91
2015	264.32	283.76	300.86	285.57	313.96	305.90	326.08	292.97	252.07	273.89	288.10	281.94
2016	232.96	221.76	219.09	228.93	248.02	243.80	270.79	263.91	270.85	245.87	263.97	260.88
2017	270.49	305.07	315.32	318.79	292.29	318.16	310.91	322.70	331.45	331.49	352.83	356.33
2018	379.63											

IC2 (SEK) PERFORMANCE % NET OF FEES													
YEAR	JAN	FEB	MAR	APR	MAY	JUN	JUL	AUG	SEP	OCT	NOV	DEC	TOTAL
2013	5.95	3.38	6.92	5.32	6.23	-1.67	10.66	-0.33	3.84	-2.14	10.14	-0.16	58.77
2014	6.61	5.24	-4.27	-4.52	5.98	5.64	1.24	6.98	1.85	8.79	3.98	5.91	51.74
2015	9.72	7.35	6.03	-5.08	9.94	-2.57	6.60	-10.15	-13.96	8.66	5.19	-2.14	17.03
2016	-17.37	-4.81	-1.20	4.49	8.34	-1.70	11.07	-2.54	2.63	-9.22	7.36	-1.17	-7.47
2017	3.68	12.78	3.36	1.10	-7.69	8.11	-2.28	3.79	2.71	0.01	6.44	0.99	36.59
2018	6.54												6.54

IC1 (USD) NAV												
YEAR	JAN	FEB	MAR	APR	MAY	JUN	JUL	AUG	SEP	OCT	NOV	DEC
2015		106.43	109.37	107.12	114.84	114.48	118.78	107.70	93.74	100.50	102.88	104.09
2016	84.51	80.27	84.02	88.68	92.24	89.25	98.50	95.48	98.04	84.48	88.63	88.85
2017	95.78	104.78	110.08	112.50	105.65	116.97	118.72	124.26	125.01	121.84	130.74	133.94
2018	147.42											

IC1 (USD) PERFORMANCE % NET OF FEES													
YEAR	JAN	FEB	MAR	APR	MAY	JUN	JUL	AUG	SEP	OCT	NOV	DEC	TOTAL
2015		6.43	2.76	-2.06	7.21	-0.31	3.76	-9.33	-12.96	7.21	2.37	1.18	4.09
2016	-18.81	-5.02	4.67	5.55	4.01	-3.24	10.36	-3.07	2.68	-13.83	4.91	0.25	-14.64
2017	7.80	9.40	5.06	2.20	-6.09	10.71	1.50	4.67	0.60	-2.54	7.30	2.45	50.75
2018	10.06												10.06

IC2 (USD) NAV												
YEAR	JAN	FEB	MAR	APR	MAY	JUN	JUL	AUG	SEP	OCT	NOV	DEC
2014					102.92	108.60	106.82	113.71	112.69	120.10	124.21	126.40
2015	132.75	141.32	145.96	143.02	153.38	152.95	158.76	143.26	124.74	133.79	137.03	138.70
2016	112.66	107.07	112.12	118.40	123.21	119.27	131.69	127.71	131.20	113.12	118.73	119.08
2017	128.42	140.54	147.72	151.02	141.89	156.98	159.38	166.89	167.94	163.77	175.76	180.12
2018	198.33											



IC2 (USD) PERFORMANCE %. NET OF FEES													
YEAR	JAN	FEB	MAR	APR	MAY	JUN	JUL	AUG	SEP	OCT	NOV	DEC	TOTAL
2014					2.92	5.52	-1.64	6.45	-0.90	6.58	3.42	1.76	26.40
2015	5.02	6.46	3.28	-2.01	7.24	-0.28	3.80	-9.76	-12.93	7.26	2.42	1.22	9.73
2016	-18.77	-4.96	4.72	5.60	4.06	-3.20	10.41	-3.02	2.73	-13.78	4.96	0.29	-14.15
2017	7.84	9.44	5.11	2.23	-6.05	10.63	1.53	4.71	0.63	-2.48	7.32	2.48	51.26
2018	10.11												10.11

IC3 (EUR) NAV													
YEAR	JAN	FEB	MAR	APR	MAY	JUN	JUL	AUG	SEP	OCT	NOV	DEC	
2009								102.15	103.33	96.78	101.30	109.19	
2010	114.20	116.43	124.73	119.62	106.33	104.06	100.57	100.37	107.52	109.68	113.59	120.00	
2011	118.82	121.50	120.59	124.92	131.89	126.43	125.36	116.73	115.66	122.76	124.53	132.03	
2012	140.67	142.42	148.58	149.43	149.16	159.24	161.09	161.06	166.38	157.79	162.21	159.79	
2013	170.25	180.70	196.39	203.85	216.23	208.50	235.66	233.03	244.50	236.34	260.09	260.40	
2014	280.76	296.58	279.47	263.97	278.02	294.48	296.09	321.00	329.83	356.89	372.31	389.50	
2015	437.99	471.80	508.68	477.10	527.32	518.14	544.00	481.68	420.82	455.95	488.29	480.47	
2016	391.59	370.46	369.62	388.23	415.58	403.47	441.58	430.05	437.55	386.50	419.24	422.75	
2017	444.79	494.96	516.44	518.14	471.42	517.72	509.84	533.67	539.99	534.17	563.68	575.38	
2018	620.04												

IC3 (EUR) PERFORMANCE %. NET OF FEES													
YEAR	JAN	FEB	MAR	APR	MAY	JUN	JUL	AUG	SEP	OCT	NOV	DEC	TOTAL
2009								2.15	1.16	-6.34	4.67	7.79	9.19
2010	4.59	1.95	7.13	-4.10	-11.11	-2.13	-3.35	-0.20	7.12	2.01	3.56	5.64	9.90
2011	-0.98	2.26	-0.75	3.59	5.58	-4.14	-0.85	-6.88	-0.92	6.14	1.44	6.02	10.03
2012	6.54	1.24	4.33	0.57	-0.18	6.76	1.16	-0.02	3.30	-5.16	2.80	-1.49	21.03
2013	6.55	6.14	8.68	3.80	6.07	-3.57	13.03	-1.12	4.92	-3.34	10.05	0.12	62.96
2014	7.82	5.63	-5.77	-5.55	5.32	5.92	0.55	8.41	2.75	8.20	4.32	4.62	49.58
2015	12.45	7.72	7.82	-6.21	10.53	-1.74	4.99	-11.46	-12.63	8.35	7.09	-1.60	23.36
2016	-18.50	-5.40	-0.23	5.03	7.04	-2.91	9.45	-2.61	1.74	-11.67	8.47	0.84	-12.01
2017	5.21	11.28	4.34	0.33	-9.02	9.82	-1.52	4.67	1.18	-1.08	5.52	2.08	36.10
2018	7.76												7.76

ID1 (SEK) NAV													
YEAR	JAN	FEB	MAR	APR	MAY	JUN	JUL	AUG	SEP	OCT	NOV	DEC	
2012					100.64	104.51	101.00	100.77	105.42	101.93	105.47	103.07	
2013	109.66	109.21	116.69	122.83	130.33	127.88	141.46	140.87	146.24	143.04	157.52	157.19	
2014	167.54	168.39	161.54	154.18	163.36	172.51	174.59	186.71	190.10	206.73	214.90	227.49	
2015	249.52	256.41	271.30	257.41	282.93	275.68	293.76	263.61	226.72	246.24	258.91	253.27	
2016	209.19	186.39	184.08	192.27	208.21	204.58	227.14	221.28	227.01	205.99	221.08	218.41	
2017	226.36	247.58	257.17	259.92	239.81	259.22	253.21	262.73	269.78	269.72	287.00	289.42	
2018	308.23												

ID1 (SEK) PERFORMANCE %. NET OF FEES													
YEAR	JAN	FEB	MAR	APR	MAY	JUN	JUL	AUG	SEP	OCT	NOV	DEC	TOTAL
2012					0.64	3.85	-3.36	-0.23	4.61	-3.31	3.47	-2.28	3.07
2013	6.39	-0.41	6.85	5.26	6.11	-1.88	10.62	-0.42	3.81	-2.19	10.12	-0.21	52.51
2014	6.58	0.51	-4.07	-4.56	5.95	5.60	1.21	6.94	1.82	8.75	3.95	5.86	44.72
2015	9.68	2.76	5.81	-5.12	9.91	-2.56	6.56	-10.26	-13.99	8.61	5.15	-2.18	11.33
2016	-17.40	-10.90	-1.24	4.45	8.29	-1.74	11.03	-2.58	2.59	-9.26	7.33	-1.21	-13.76
2017	3.64	9.37	3.87	1.07	-7.74	8.09	-2.32	3.76	2.68	-0.02	6.41	0.84	32.51
2018	6.50												6.50

RC1 (EUR) NAV													
YEAR	JAN	FEB	MAR	APR	MAY	JUN	JUL	AUG	SEP	OCT	NOV	DEC	
2010									104.35	104.75	110.36	115.32	
2011	114.18	116.50	115.79	119.40	125.10	120.47	119.15	110.91	109.86	116.68	118.31	124.92	
2012	132.14	133.59	138.66	139.34	139.09	147.39	148.89	148.83	153.16	145.20	149.21	146.92	
2013	156.14	164.59	177.28	183.22	192.89	185.65	206.96	204.86	212.69	205.49	224.58	224.79	
2014	240.30	251.66	236.42	223.21	235.00	247.45	248.60	266.95	273.34	293.13	304.24	315.14	
2015	349.47	373.47	398.19	373.48	411.03	404.45	422.31	375.75	328.13	355.37	380.41	374.15	
2016	304.81	288.23	287.45	301.80	322.91	313.37	342.82	333.71	339.38	299.66	324.90	327.48	
2017	344.40	383.08	399.53	400.83	364.36	400.14	393.87	411.29	415.46	410.84	431.35	439.53	
2018	469.64												

RC1 (EUR) PERFORMANCE % NET OF FEES													
YEAR	JAN	FEB	MAR	APR	MAY	JUN	JUL	AUG	SEP	OCT	NOV	DEC	TOTAL
2010									4.35	0.38	5.36	4.49	15.32
2011	-0.99	2.03	-0.61	3.12	4.77	-3.70	-1.10	-6.92	-0.95	6.21	1.40	5.59	8.32
2012	5.78	1.10	3.80	0.49	-0.18	5.97	1.02	-0.04	2.91	-5.20	2.76	-1.53	17.61
2013	6.28	5.41	7.71	3.35	5.28	-3.75	11.48	-1.01	3.82	-3.39	9.29	0.09	53.00
2014	6.90	4.73	-6.06	-5.59	5.28	5.30	0.46	7.38	2.39	7.24	3.80	3.58	40.19
2015	10.89	6.87	6.62	-6.21	10.05	-1.60	4.42	-11.03	-12.67	8.30	7.05	-1.65	18.73
2016	-18.53	-5.44	-0.27	4.99	6.99	-2.95	9.40	-2.66	1.70	-11.70	8.42	0.79	-12.47
2017	5.17	11.23	4.29	0.33	-9.10	9.82	-1.57	4.42	1.01	-1.11	4.99	1.90	34.22
2018	6.85												6.85

RC1 (SEK) NAV													
YEAR	JAN	FEB	MAR	APR	MAY	JUN	JUL	AUG	SEP	OCT	NOV	DEC	
2009						99.74	99.92	101.00	101.51	96.72	101.85	106.75	
2010	110.70	108.05	115.09	109.18	96.69	93.87	89.69	88.93	93.37	96.59	98.29	102.16	
2011	98.91	100.22	101.80	105.28	111.04	109.04	107.03	100.09	100.29	104.24	106.42	111.05	
2012	118.78	118.87	123.79	125.05	125.79	130.61	126.17	125.85	131.65	127.25	131.60	128.55	
2013	136.76	141.24	150.89	158.78	168.47	165.25	182.72	181.89	188.61	184.41	203.02	202.38	
2014	215.63	226.61	216.26	206.33	218.55	230.73	233.43	249.55	253.98	276.09	286.74	302.97	
2015	332.20	356.11	376.45	357.02	392.32	381.98	406.89	365.09	313.86	340.74	358.11	350.16	
2016	289.10	274.97	271.43	283.40	306.76	301.29	334.38	325.60	333.90	302.85	324.90	320.85	
2017	332.37	374.59	388.12	392.14	361.60	390.79	381.55	395.80	406.28	406.01	431.88	435.88	
2018	464.01												

RC1 (SEK) PERFORMANCE % NET OF FEES													
YEAR	JAN	FEB	MAR	APR	MAY	JUN	JUL	AUG	SEP	OCT	NOV	DEC	TOTAL
2009						-0.26	0.18	1.08	0.50	-4.72	5.30	4.81	6.75
2010	3.70	-2.39	6.52	-5.14	-11.44	-2.92	-4.45	-0.85	4.99	3.45	1.76	3.94	-4.30
2011	-3.18	1.32	1.58	3.42	5.47	-1.80	-1.84	-6.48	0.20	3.94	2.09	4.35	8.70
2012	6.96	0.08	4.14	1.02	0.59	3.83	-3.40	-0.25	4.61	-3.34	3.42	-2.32	15.76
2013	6.39	3.28	6.83	5.23	6.10	-1.91	10.57	-0.45	3.69	-2.23	10.09	-0.32	57.43
2014	6.55	5.09	-4.57	-4.59	5.92	5.57	1.17	6.91	1.78	8.71	3.86	5.66	49.70
2015	9.65	7.20	5.71	-5.16	9.89	-2.64	6.52	-10.27	-14.03	8.56	5.10	-2.22	15.58
2016	-17.44	-4.89	-1.29	4.41	8.24	-1.78	10.98	-2.63	2.55	-9.30	7.28	-1.25	-8.37
2017	3.59	12.70	3.61	1.04	-7.79	8.07	-2.36	3.73	2.65	-0.07	6.37	0.93	35.85
2018	6.45												6.45

RC2 (SEK) NAV													
YEAR	JAN	FEB	MAR	APR	MAY	JUN	JUL	AUG	SEP	OCT	NOV	DEC	
2009						99.74	99.98	101.12	101.68	96.94	102.10	107.07	
2010	111.07	108.57	115.69	109.78	97.28	94.47	90.31	89.58	94.10	97.38	99.14	103.08	
2011	99.84	101.20	102.84	106.40	112.28	110.30	108.32	101.33	101.58	105.64	107.89	112.63	
2012	120.30	120.44	125.51	126.83	127.66	132.58	128.13	127.86	133.77	129.36	133.84	130.80	
2013	139.17	143.74	153.48	161.57	171.53	167.92	185.74	185.04	192.06	187.86	206.87	206.39	
2014	219.98	231.28	221.05	210.98	223.54	236.05	238.90	255.47	260.24	283.00	293.97	310.92	
2015	341.02	365.80	386.77	366.96	403.34	392.85	418.61	375.87	323.26	351.09	369.14	361.10	
2016	298.25	283.80	280.26	292.73	317.00	311.48	345.83	336.89	345.62	313.62	336.59	332.52	
2017	344.62	388.54	402.06	406.34	374.90	405.23	395.81	410.70	421.71	421.61	448.59	452.80	
2018	482.21												

RC2 (SEK) PERFORMANCE % NET OF FEES													
YEAR	JAN	FEB	MAR	APR	MAY	JUN	JUL	AUG	SEP	OCT	NOV	DEC	TOTAL
2009						-0.26	0.24	1.14	0.55	-4.66	5.32	4.87	7.07
2010	3.74	-2.25	6.56	-5.11	-11.39	-2.89	-4.40	-0.81	5.05	3.49	1.81	3.97	-3.73
2011	-3.14	1.36	1.62	3.46	5.53	-1.76	-1.80	-6.45	0.25	4.00	2.13	4.39	9.26
2012	6.81	0.12	4.21	1.05	0.65	3.85	-3.36	-0.21	4.62	-3.30	3.46	-2.27	16.13
2013	6.40	3.28	6.78	5.27	6.16	-2.10	10.61	-0.38	3.79	-2.19	10.12	-0.23	57.79
2014	6.58	5.14	-4.42	-4.56	5.95	5.60	1.21	6.94	1.87	8.75	3.88	5.77	50.65
2015	9.68	7.27	5.73	-5.12	9.91	-2.60	6.56	-10.21	-14.00	8.61	5.14	-2.18	16.14
2016	-17.41	-4.84	-1.25	4.45	8.29	-1.74	11.03	-2.59	2.59	-9.26	7.32	-1.21	-7.91
2017	3.64	12.74	3.48	1.06	-7.74	8.09	-2.32	3.76	2.68	-0.02	6.40	0.94	36.17
2018	6.50												6.50

## ABOUT RHENMAN & PARTNERS

Rhenman & Partners Asset Management, founded in 2008, is a Stockholm-based investment manager focusing on two niche funds administered by SEB Fund Services S.A.: Rhenman Healthcare Equity L/S, founded in 2009, and Rhenman Global Opportunities L/S, founded in 2016. Assets under management amount to approximately EUR 500m. Investment Teams of both Funds are in their investment processes supported by renowned Advisory Boards, including professors and experts with many years of market experience and extensive networks around the world.

## LEGAL DISCLAIMER

Rhenman Healthcare Equity L/S. "The Fund" is not an investment fund as defined in the European Union directives relating to undertakings for collective investment in transferable securities (UCITS). Legal information regarding Fund is contained in the Prospectus and the KIID, available at Rhenman & Partners Asset Management AB (Rhenman & Partners) webpage: <http://rhepa.com/the-fund/prospectus/>.

This material has been prepared by Rhenman & Partners for professional and non-professional investors. Rhenman & Partners when preparing this information has not taken into account any one customer's particular investment objectives, financial resources or other relevant circumstances and the opinions and recommendations herein are not intended to represent recommendations of particular investments to particular customers. This material is for informational purposes only and should not be construed as an offer or solicitation to sell or buy units of the Fund. Investors is strongly recommended to get professional advice as to whether investment in the Fund is appropriate having regard to their particular investment needs, objectives and financial circumstances, before investing.

All securities' transactions involve risks, which include (among others) the risk of adverse or unanticipated market, financial or political developments and, in international transactions, currency risk. There can be no assurance that an investment in the Fund will achieve profits or avoid incurring substantial losses. There is a high degree of risk inherent in investments and they may not be suitable for all eligible investors. It is possible that an investor may lose some or all of its investment. The past is not necessarily a guide to the future performance of an investment. The value of investments may fall as well as rise and investors may not get back the amount invested. Changes in rates of foreign exchange may cause the value of investments to go up or down.

Before making an investment decision, an investor and/or its adviser should (i) consider the suitability of investments in the Fund with respect to its investment objectives and personal situation and (ii) consider factors such as its personal net worth, income, age, risk tolerance and liquidity needs. Short-term investors and investors who cannot bear the loss of some or all of their investment or the risks associated with the limited liquidity of an investment should not invest.

Due care and attention has been used in the preparation of this information. However, actual results may vary from their forecasts, and any variation may be materially positive or negative. Forecasts, by their very nature, are subject to uncertainty and contingencies, many of which are outside the control of Rhenman & Partners. Rhenman & Partners cannot guarantee that the information contained herein is without fault or entirely accurate. There may be delays, omissions or inaccuracies in the information. Any dated information is published as of its date only and no obligation or responsibility is undertaken to update or amend any such information.

The information in this material is based on sources that Rhenman & Partners believes to be reliable. Rhenman & Partners can however not guarantee that all information is correct. Furthermore, information and opinions may change without notice. Rhenman & Partners is under no obligation to make amendments or changes to this publication if errors are found or opinions or information change. Rhenman & Partners accepts no responsibility for the accuracy of its sources.

Rhenman & Partners is the owner of all works of authorship including, but not limited to, all design text, images and trademarks in this material unless otherwise explicitly stated. The use of Rhenman & Partners' material, works or trademarks is forbidden without written consent except where otherwise expressly stated. Furthermore, it is prohibited to publish material made or gathered by Rhenman & Partners without written consent.

By accessing and using the <http://rhepa.com/> website and any pages thereof, you acknowledge that you have reviewed the following important legal information and understand and agree to the terms and conditions set therein. If you do not agree to the terms and conditions in this disclaimer, do not access or use <http://rhepa.com/website> in any way.

Products and services described herein are not available to all persons in all geographical locations. Rhenman & Partner will not provide any such products or services to any person if the provision of such services could be in violation of law or regulation in such person's home country jurisdiction or any other related jurisdiction. The units of the Fund may not be offered or sold to or within the United States or in any other country where such offer or sale would conflict with applicable laws or regulations.

In no event, including (but not limited to) negligence, will Rhenman & Partner be liable to you or anyone else for any consequential, incidental, special or indirect damages (including but not limited to lost profits, trading losses and damages).

The sole legally binding basis for the purchase of shares of the Fund described in this information is the latest valid sales prospectus with its terms of contract. Subscriptions cannot be received on the basis of financial reports.

An investment in the Fund does not represent deposits or other liabilities of any member of the Rhenman & Partners Group. Neither Rhenman & Partners nor any member of the Rhenman & Partners Group and its affiliates guarantees in any way the performance of the Fund, repayment of capital from the Fund, any particular return from or any increase in the value of the Fund.

# SUBSCRIBE TO OUR MONTHLY NEWSLETTER AT [WWW.RHEPA.COM](http://WWW.RHEPA.COM)

### CONTACT DETAILS

Rhenman & Partners  
Asset Management AB  
Strandvägen 5A  
114 51 Stockholm, Sweden  
Tel + 46 8 459 88 80  
[info@rhepa.com](mailto:info@rhepa.com)

*International investors (non Swedish):*  
Carl Grevelius  
Head of Investor Relations  
Tel + 46 8 459 88 83  
[carl@rhepa.com](mailto:carl@rhepa.com)

*Swedish investors:*  
Anders Grelsson  
Swedish Investor Relations  
Mob + 46 70 374 43 20  
[anders@rhepa.com](mailto:anders@rhepa.com)

[WWW.RHEPA.COM](http://WWW.RHEPA.COM)