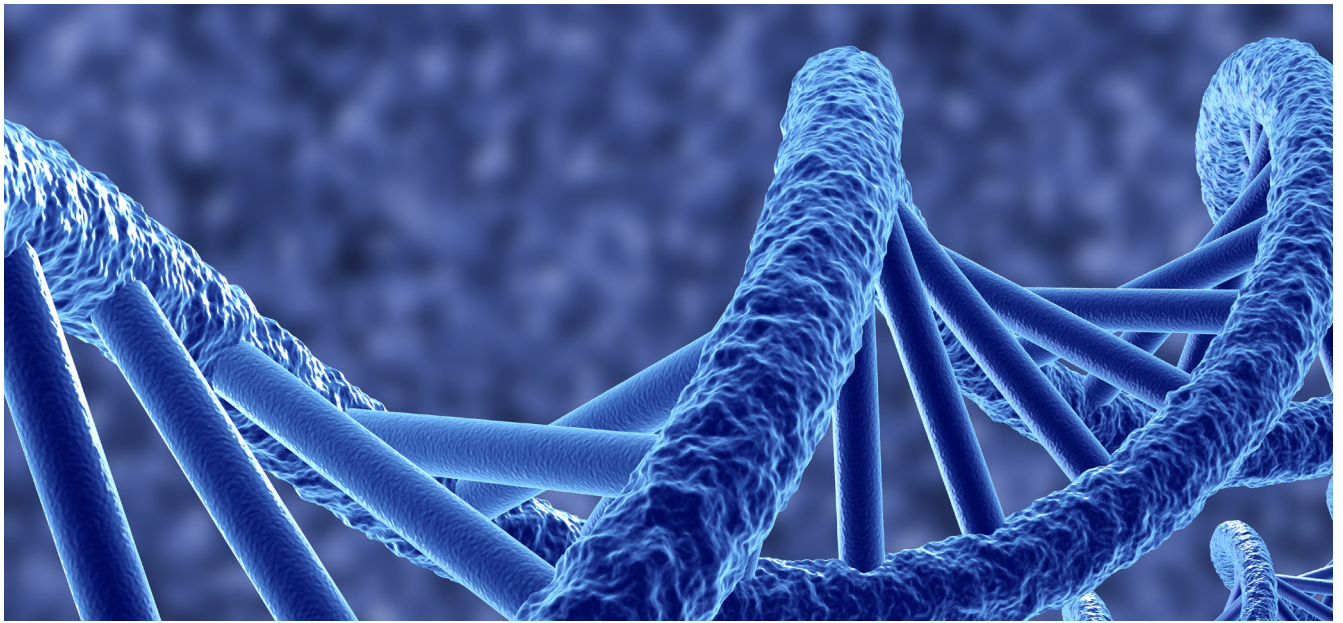


FEBRUARY 2018



RHENMAN HEALTHCARE EQUITY L/S

OUTSTANDING LONG-TERM PERFORMANCE IN A COMPLEX MARKET

- Annualised return of 21 % (net) since inception.
- Over 20 years managing successful healthcare funds.
- World renowned industry professionals each with over 30 years experience actively involved through the Scientific Advisory Board.
- Unquestionable alpha generation. outperforming all relevant indices and top quartile in all relevant rankings.
- Long term investment horizon:
 - Diversified across subsectors. company size and geographies to lower volatility.
 - Active trading around holdings.
 - Predominantly cash flow positive companies.
 - Typically investing post approval. mitigating event risk.

MONTHLY UPDATE

The stable upward trend that we had become accustomed to in stock markets around the world came to an abrupt halt at the beginning of February. Apprehension and rising inflation sparked a dramatic drop in share prices early in the month and most of the major stock markets plunged by nearly ten percent in less than a week. To a large degree technical circumstances were to blame for the magnitude of these falls. The VIX index, which is a key measure of market volatility expectations, had been falling for quite some time, thereby attracting many investors who were expecting this trend to continue. However, once the markets had become volatile, the index took a sharp upward turn, resulting in major sell-offs and losses on instruments linked to the VIX. But, the instability also led to automatic, massive reallocations, with investors shifting funds out of the stock market and into other asset classes.

During the remainder of the month, stock markets settled down

and, measured in local currencies more than half of the early-February losses had been recovered by the end of the month. Otherwise, company earnings reports for the fourth quarter 2017 came in generally strong. US companies in particular reported high earnings and sales growth, in part stemming from the devaluation of the USD currency last year. European companies on the other hand, experienced some currency-related headwinds. Nevertheless, on the whole, they reported satisfactory results.

Perhaps the most striking feature in February was the persistent upward trend of certain companies in the technology and consumer discretionary sectors. Amazon and Netflix hit all-time highs and have risen approximately 30 percent and 50 percent respectively this year. Otherwise, February was a weak month in most sectors, particularly energy and consumer staples. Financials recorded a small increase, in part due to rising interest rates. Measured

Continued on the next page ➤

in EUR, the healthcare sector was down nearly three percent, which is slightly worse than the world index, which decreased 2.7 percent.

FUND PERFORMANCE

Measured in its main share class IC1 (EUR), the fund remained essentially unchanged since the end of January.

The biggest contributors were Abiomed, Intra-Cellular Therapies and Esperion Therapeutics. Adamas Pharmaceuticals, Exelixis and Sage Therapeutics were the worst contributors.

Abiomed is a US manufacturer of medical implant devices. The company offers a world-leading product, Impella, which is a minimally invasive heart pump that improves blood circulation when the patient's own heart function has become impaired. In February, the company celebrated additional progress with Impella when it received expanded approval from the FDA, thereby increasing the product's sales potential. That, along with a very favorable interim report that showed a substantial increase in sales, had a very positive impact on the company's stock price.

Lumateperone is the leading drug candidate of the US research company Intra-Cellular Therapies. The drug is used to treat schizophrenia and it reported significant clinical advances in 2017. The company is expected to apply for FDA approval of lumateperone in 2018. During the month, investors started showing more interest in the rest of the company's research portfolio and its clinical studies for other drug candidates, all of which had a positive impact on its stock.

Esperion is a US research company that has developed a new drug, in tablet form, for lowering cholesterol. The company is currently involved in several Phase 3 studies that will hopefully lead to FDA approval. The first study results are expected to be released already in March 2018 and investors are starting to show increasing interest in and optimism for the company and its

stock, which was reflected in the company's stock price during the period.

Adamas Pharmaceuticals, a US research company, was the biggest contributor to the fund in 2017. The company suffered a major setback in February, however, when one of its competitors obtained approval on its long-acting version of the same substance that its flagship product, Gocovri is based on. These two products are not to be regarded as substitutes. Nevertheless, the market had a hard time assessing the impact that this could have on Gocovri's sales potential, which caused a dramatic drop in the company's stock price.

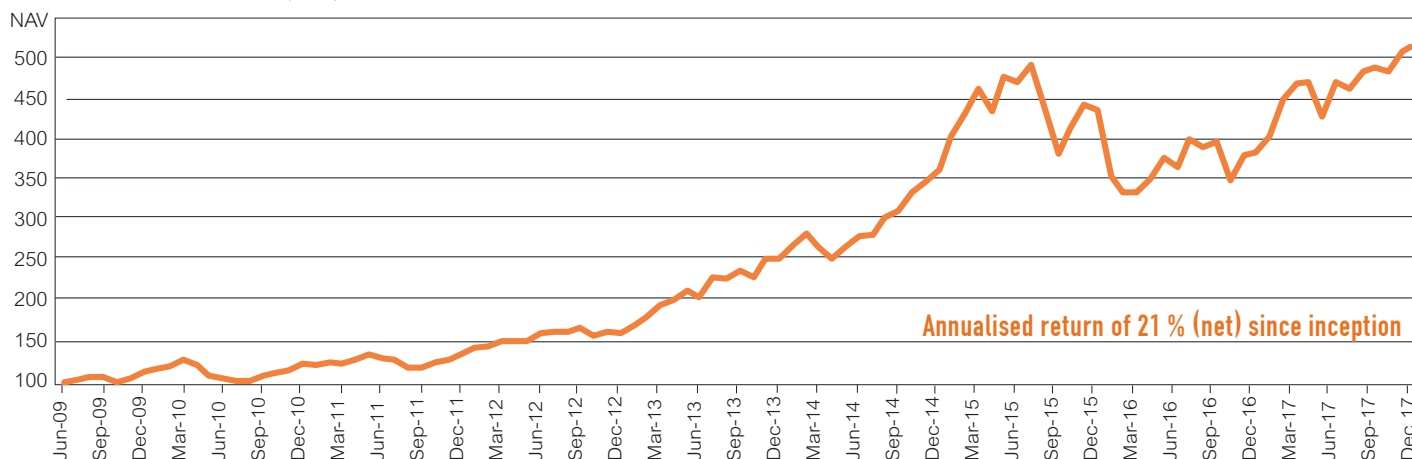
Exelixis is an oncology-focused biotechnology company that has obtained approval for its product Cabometyx (a treatment option for patients with advanced kidney cancer). The company's sales figures for the fourth quarter were lower than expected, which resulted in weak performance of its stock. The expanded approval that the product obtained in December has yet to impact sales. However, the higher volumes stemming from the FDA approval of the drug for an expanded indication for patients with RCC are expected to boost sales growth in the year ahead.

Sage Therapeutics is a US biopharmaceutical company that has continued to make progress with its drug candidate SAGE-17, which is used to treat major depressive disorder. In February the FDA granted the company accelerated review status for SAGE-17. The company's share price responded negatively however when it announced that it would once again be raising capital, despite having just done so in November of last year.

FORECAST

The year got off to a good start in 2018, but it was short-lived and stock markets around the world have since become increasingly volatile. Despite the favorable outlook for the world economy and the higher earnings that companies are reporting, there are doubts

FUND PERFORMANCE - IC1 (EUR)



FEBRUARY 2018

SHARE CLASS	NAV	MONTHLY RETURN	YTD 2018	SINCE INCEPTION ¹
IC1 (EUR)	535.64	0.01%	6.90%	435.64%
IC3 (EUR)	620.31	0.04%	7.81%	520.31%
IC2 (SEK)	389.78	2.67%	9.39%	289.78%
ID1 (SEK)	298.96	-3.01%	3.30%	198.96%
IC1 (USD)	145.05	-1.61%	8.29%	45.05%
IC2 (USD)	195.19	-1.58%	8.37%	95.19%
RC1 (EUR)	469.79	0.03%	6.88%	369.79%
RC1 (SEK)	476.10	2.61%	9.23%	376.10%
RC2 (SEK)	495.26	2.71%	9.38%	395.26%
3 month Euribor (EUR)	103.21	-0.03%	-0.05%	3.21%

Notes: ¹ Please find launch date information on page 4 and 6.

about how sustainable the profit growth of recent years will be going forward. Add to that the announcement by President Trump after month-end to introduce tariffs on steel. Although this may just be a negotiating tactic, it nevertheless fuels uncertainty and signals that we are heading for more protectionism in the world economy.

The fund has continued to deliver, thanks to our systematic selection of portfolio holdings that is primarily based on long-term considerations of clinical benefits and opportunities for commercial success. There have, however, been significant stock price increases in certain small and medium-sized companies. They have now grown to levels so high that we feel it is necessary to gradually reduce the relative size of these positions. Efforts to do so are already underway and will intensify over time. A first step, which was taken early in February, involved the acquisition of holdings in larger companies and we were able to increase our existing holdings in such companies at very attractive prices. These actions have increased the fund's net exposure, but the percentage of holdings in small and medium-sized companies has fallen. Net sales of positions in small and medium-sized companies are now a high priority although the timing of such sales will depend on the overall conditions in the market. In the meantime, we can conclude that good news, particularly in the form of clinical data, typically has been met with a positive reaction from the stock market. We are convinced that we have many holdings in the fund, not least among small and medium-sized companies, which are well positioned for further price increases. ■

FUND CHARACTERISTICS

KIID AND PROSPECTUS (WEBPAGE)

<http://fundinfo.sebfundservices.lu/RhenmanPartnersFund/>

AIFM / MANAGEMENT COMPANY

SEB Fund Services S.A.

PRIME BROKER

Skandinaviska Enskilda Banken AB (publ)

INVESTABLE CURRENCIES

Euro (EUR) / Swedish Krona (SEK) / US Dollar (USD)

DEPOSITARY AND PAYING AGENT

Skandinaviska Enskilda Banken S.A.

TARGET FUND SIZE

EUR 1bn (hard close)

RETURN TARGET

Annualised net returns in excess of 12% over time

AUDITOR

PricewaterhouseCoopers (PwC)

LEGAL STRUCTURE

AIF / FCP (Fonds Commun de Placement) under Part II of the Luxembourg Law on Investment Funds

SUBSCRIPTION / REDEMPTION

Monthly

PORTFOLIO MANAGER

Rhenman & Partners Asset Management AB

MINIMUM TOP UP

No minimum

INVESTMENT TEAM

Henrik Rhenman & Susanna Urdmark

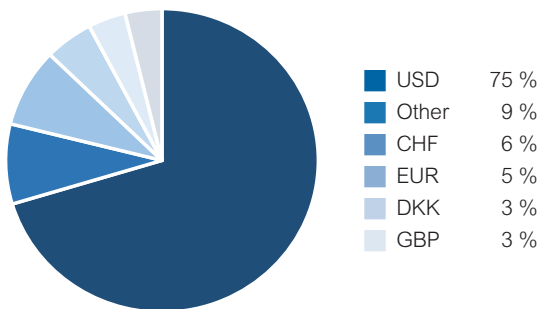
NOTICE PERIOD

3 working days

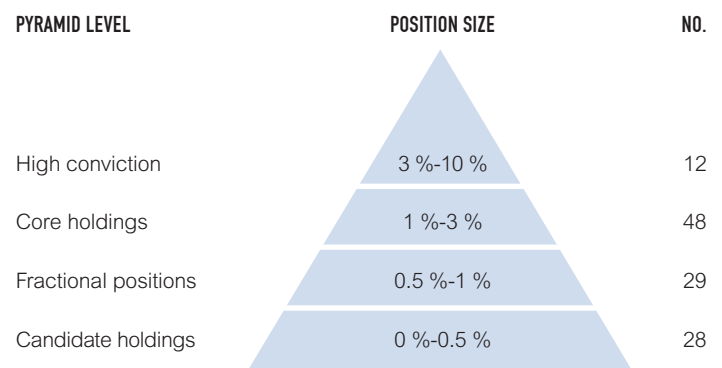
HURDLE RATE

Euribor 90D (high-water mark)

CURRENCY EXPOSURE²



PORTFOLIO CONSTRUCTION³



EXPOSURE⁴

Long	160 %
Short	20 %
Gross	180 %
Net	140 %

RISK (IC1 EUR)

Value at risk ⁵	2.91 %
Standard Deviation ⁶	20.08 %
Sharpe Ratio ⁶	1.05

AUM⁷

Fund:	EUR 557m
	USD 680m
Firm:	EUR 571m

LARGEST LONG POSITIONS

1 Roche Holding Ltd
2 Horizon Pharma Plc
3 Celgene Corp
4 Nektar Therapeutics
5 Vertex Pharmaceuticals Inc

SHARE CLASS CHARACTERISTICS – INSTITUTIONAL SHARE CLASSES (ONLY INSTITUTIONAL INVESTORS)⁸

	MINIMUM INVESTMENT	MGT. FEE	PERF. FEE	ISIN NUMBER	BLOOMBERG TICKER	LIPPER REUTERS	TELEKURS
IC1 (EUR)	250,000	1.50 %	20 %	LU0417598108	RHLEIC1 LX	65147588	10034579
IC3 (EUR)	5,000,000	1.50 %	10 %	LU0434614789	RHHIC3 LX	68014068	10283697
IC2 (SEK)	50,000,000	1.00 %	20 %	LU0417598793	RHHIC2S LX	68204997	20323930
ID1 (SEK)	100,000	1.50 %	20 %	LU0417599098	RHHIC1D1 LX	68153820	18491109
IC1 (USD)	300,000	1.50 %	20 %	LU0417598280	RHUIC1A LX	68305812	26812813
IC2 (USD)	6,000,000	1.00 %	20 %	LU0417598520	RHUIC2U LX	68265724	24456000

SHARE CLASS CHARACTERISTICS – RETAIL SHARE CLASSES (ALSO OPEN TO INSTITUTIONAL INVESTORS)⁸

RC1 (EUR)	2,500	2.00 %	20 %	LU0417597555	RHLERC1 LX	65147589	10034567
RC1 (SEK)	500	2.00 %	20 %	LU0417597712	RHLSRC1 LX	68014067	10239523
RC2 (SEK)	2,500,000	1.50 %	20 %	LU0417598017	RHLSRC2 LX	68015239	10239528

Notes: ² As a percentage of the market value of the long and short positions (excluding cash positions). ³ Number of long equity positions (excluding any ETFs). ⁴ The exposure is adjusted for net fund flow at month end. ⁵ For holdings at month end (95 % conf. int. 250 days history). ⁶ Standard deviation and Sharpe ratio are annualized. ⁷ The AUM is adjusted for net fund flow at month end.

⁸ Administrative fees are charged in addition to the fees above. Further information is available in the KIID as well as the prospectus (part B. A14-18).

HISTORICAL RETURNS AND NAVS

IC1 (EUR) NAV												
YEAR	JAN	FEB	MAR	APR	MAY	JUN	JUL	AUG	SEP	OCT	NOV	DEC
2009						100.75	105.19	107.47	107.83	100.99	105.70	113.28
2010	117.91	119.94	127.53	122.31	108.73	106.40	102.84	102.63	109.95	112.16	116.17	122.73
2011	121.53	124.28	123.35	127.79	134.24	129.26	128.19	119.36	118.28	125.67	127.48	134.59
2012	142.42	143.99	149.51	150.29	150.07	159.07	160.74	160.74	165.47	156.93	161.34	158.92
2013	168.92	178.11	191.91	198.41	209.10	202.53	225.87	223.66	233.45	225.66	246.67	246.79
2014	263.91	277.13	262.34	247.80	260.99	274.87	276.25	296.82	304.03	326.16	338.66	352.48
2015	391.34	419.34	448.65	421.01	463.44	456.29	476.60	424.39	370.76	401.72	430.21	423.32
2016	345.01	326.39	325.66	342.05	366.15	355.48	389.06	378.89	385.50	340.52	369.37	372.46
2017	391.88	436.08	454.95	456.28	415.30	455.96	449.05	468.44	473.40	468.37	491.88	501.07
2018	535.61	535.64										

IC1 (EUR) PERFORMANCE % NET OF FEES													
YEAR	JAN	FEB	MAR	APR	MAY	JUN	JUL	AUG	SEP	OCT	NOV	DEC	TOTAL
2009						0.75	4.41	2.17	0.33	-6.34	4.66	7.17	13.28
2010	4.09	1.72	6.33	-4.09	-11.10	-2.14	-3.35	-0.20	7.13	2.01	3.58	5.65	8.34
2011	-0.98	2.26	-0.75	3.60	5.05	-3.71	-0.83	-6.89	-0.90	6.25	1.44	5.58	9.66
2012	5.82	1.10	3.83	0.52	-0.15	6.00	1.05	0.00	2.94	-5.16	2.81	-1.50	18.08
2013	6.29	5.44	7.75	3.39	5.39	-3.14	11.52	-0.98	4.38	-3.34	9.31	0.05	55.29
2014	6.94	5.01	-5.34	-5.54	5.32	5.32	0.50	7.45	2.43	7.28	3.83	4.08	42.83
2015	11.02	7.15	6.99	-6.16	10.08	-1.54	4.45	-10.95	-12.64	8.35	7.09	-1.60	20.10
2016	-18.50	-5.40	-0.22	5.03	7.05	-2.91	9.45	-2.61	1.74	-11.67	8.47	0.84	-12.01
2017	5.21	11.28	4.33	0.29	-8.98	9.79	-1.52	4.32	1.06	-1.06	5.02	1.87	34.53
2018	6.89	0.01											6.90

IC2 (SEK) NAV												
YEAR	JAN	FEB	MAR	APR	MAY	JUN	JUL	AUG	SEP	OCT	NOV	DEC
2013	105.95	109.53	117.11	123.34	131.02	128.83	142.56	142.09	147.55	144.39	159.03	158.77
2014	169.27	178.14	170.53	162.83	172.56	182.30	184.56	197.44	201.10	218.77	227.47	240.91
2015	264.32	283.76	300.86	285.57	313.96	305.90	326.08	292.97	252.07	273.89	288.10	281.94
2016	232.96	221.76	219.09	228.93	248.02	243.80	270.79	263.91	270.85	245.87	263.97	260.88
2017	270.49	305.07	315.32	318.79	292.29	318.16	310.91	322.70	331.45	331.49	352.83	356.33
2018	379.63	389.78										

IC2 (SEK) PERFORMANCE % NET OF FEES													
YEAR	JAN	FEB	MAR	APR	MAY	JUN	JUL	AUG	SEP	OCT	NOV	DEC	TOTAL
2013	5.95	3.38	6.92	5.32	6.23	-1.67	10.66	-0.33	3.84	-2.14	10.14	-0.16	58.77
2014	6.61	5.24	-4.27	-4.52	5.98	5.64	1.24	6.98	1.85	8.79	3.98	5.91	51.74
2015	9.72	7.35	6.03	-5.08	9.94	-2.57	6.60	-10.15	-13.96	8.66	5.19	-2.14	17.03
2016	-17.37	-4.81	-1.20	4.49	8.34	-1.70	11.07	-2.54	2.63	-9.22	7.36	-1.17	-7.47
2017	3.68	12.78	3.36	1.10	-7.69	8.11	-2.28	3.79	2.71	0.01	6.44	0.99	36.59
2018	6.54	2.67											9.39

IC1 (USD) NAV												
YEAR	JAN	FEB	MAR	APR	MAY	JUN	JUL	AUG	SEP	OCT	NOV	DEC
2015		106.43	109.37	107.12	114.84	114.48	118.78	107.70	93.74	100.50	102.88	104.09
2016	84.51	80.27	84.02	88.68	92.24	89.25	98.50	95.48	98.04	84.48	88.63	88.85
2017	95.78	104.78	110.08	112.50	105.65	116.97	118.72	124.26	125.01	121.84	130.74	133.94
2018	147.42	145.05										

IC1 (USD) PERFORMANCE % NET OF FEES													
YEAR	JAN	FEB	MAR	APR	MAY	JUN	JUL	AUG	SEP	OCT	NOV	DEC	TOTAL
2015		6.43	2.76	-2.06	7.21	-0.31	3.76	-9.33	-12.96	7.21	2.37	1.18	4.09
2016	-18.81	-5.02	4.67	5.55	4.01	-3.24	10.36	-3.07	2.68	-13.83	4.91	0.25	-14.64
2017	7.80	9.40	5.06	2.20	-6.09	10.71	1.50	4.67	0.60	-2.54	7.30	2.45	50.75
2018	10.06	-1.61											8.29

IC2 (USD) NAV												
YEAR	JAN	FEB	MAR	APR	MAY	JUN	JUL	AUG	SEP	OCT	NOV	DEC
2014					102.92	108.60	106.82	113.71	112.69	120.10	124.21	126.40
2015	132.75	141.32	145.96	143.02	153.38	152.95	158.76	143.26	124.74	133.79	137.03	138.70
2016	112.66	107.07	112.12	118.40	123.21	119.27	131.69	127.71	131.20	113.12	118.73	119.08
2017	128.42	140.54	147.72	151.02	141.89	156.98	159.38	166.89	167.94	163.77	175.76	180.12
2018	198.33	195.19										

IC2 (USD) PERFORMANCE %. NET OF FEES													
YEAR	JAN	FEB	MAR	APR	MAY	JUN	JUL	AUG	SEP	OCT	NOV	DEC	TOTAL
2014					2.92	5.52	-1.64	6.45	-0.90	6.58	3.42	1.76	26.40
2015	5.02	6.46	3.28	-2.01	7.24	-0.28	3.80	-9.76	-12.93	7.26	2.42	1.22	9.73
2016	-18.77	-4.96	4.72	5.60	4.06	-3.20	10.41	-3.02	2.73	-13.78	4.96	0.29	-14.15
2017	7.84	9.44	5.11	2.23	-6.05	10.63	1.53	4.71	0.63	-2.48	7.32	2.48	51.26
2018	10.11	-1.58											8.37

IC3 (EUR) NAV													
YEAR	JAN	FEB	MAR	APR	MAY	JUN	JUL	AUG	SEP	OCT	NOV	DEC	
2009								102.15	103.33	96.78	101.30	109.19	
2010	114.20	116.43	124.73	119.62	106.33	104.06	100.57	100.37	107.52	109.68	113.59	120.00	
2011	118.82	121.50	120.59	124.92	131.89	126.43	125.36	116.73	115.66	122.76	124.53	132.03	
2012	140.67	142.42	148.58	149.43	149.16	159.24	161.09	161.06	166.38	157.79	162.21	159.79	
2013	170.25	180.70	196.39	203.85	216.23	208.50	235.66	233.03	244.50	236.34	260.09	260.40	
2014	280.76	296.58	279.47	263.97	278.02	294.48	296.09	321.00	329.83	356.89	372.31	389.50	
2015	437.99	471.80	508.68	477.10	527.32	518.14	544.00	481.68	420.82	455.95	488.29	480.47	
2016	391.59	370.46	369.62	388.23	415.58	403.47	441.58	430.05	437.55	386.50	419.24	422.75	
2017	444.79	494.96	516.44	518.14	471.42	517.72	509.84	533.67	539.99	534.17	563.68	575.38	
2018	620.04	620.31											

IC3 (EUR) PERFORMANCE %. NET OF FEES													
YEAR	JAN	FEB	MAR	APR	MAY	JUN	JUL	AUG	SEP	OCT	NOV	DEC	TOTAL
2009								2.15	1.16	-6.34	4.67	7.79	9.19
2010	4.59	1.95	7.13	-4.10	-11.11	-2.13	-3.35	-0.20	7.12	2.01	3.56	5.64	9.90
2011	-0.98	2.26	-0.75	3.59	5.58	-4.14	-0.85	-6.88	-0.92	6.14	1.44	6.02	10.03
2012	6.54	1.24	4.33	0.57	-0.18	6.76	1.16	-0.02	3.30	-5.16	2.80	-1.49	21.03
2013	6.55	6.14	8.68	3.80	6.07	-3.57	13.03	-1.12	4.92	-3.34	10.05	0.12	62.96
2014	7.82	5.63	-5.77	-5.55	5.32	5.92	0.55	8.41	2.75	8.20	4.32	4.62	49.58
2015	12.45	7.72	7.82	-6.21	10.53	-1.74	4.99	-11.46	-12.63	8.35	7.09	-1.60	23.36
2016	-18.50	-5.40	-0.23	5.03	7.04	-2.91	9.45	-2.61	1.74	-11.67	8.47	0.84	-12.01
2017	5.21	11.28	4.34	0.33	-9.02	9.82	-1.52	4.67	1.18	-1.08	5.52	2.08	36.10
2018	7.76	0.04											7.81

ID1 (SEK) NAV													
YEAR	JAN	FEB	MAR	APR	MAY	JUN	JUL	AUG	SEP	OCT	NOV	DEC	
2012					100.64	104.51	101.00	100.77	105.42	101.93	105.47	103.07	
2013	109.66	109.21	116.69	122.83	130.33	127.88	141.46	140.87	146.24	143.04	157.52	157.19	
2014	167.54	168.39	161.54	154.18	163.36	172.51	174.59	186.71	190.10	206.73	214.90	227.49	
2015	249.52	256.41	271.30	257.41	282.93	275.68	293.76	263.61	226.72	246.24	258.91	253.27	
2016	209.19	186.39	184.08	192.27	208.21	204.58	227.14	221.28	227.01	205.99	221.08	218.41	
2017	226.36	247.58	257.17	259.92	239.81	259.22	253.21	262.73	269.78	269.72	287.00	289.42	
2018	308.23	298.96											

ID1 (SEK) PERFORMANCE %. NET OF FEES													
YEAR	JAN	FEB	MAR	APR	MAY	JUN	JUL	AUG	SEP	OCT	NOV	DEC	TOTAL
2012					0.64	3.85	-3.36	-0.23	4.61	-3.31	3.47	-2.28	3.07
2013	6.39	-0.41	6.85	5.26	6.11	-1.88	10.62	-0.42	3.81	-2.19	10.12	-0.21	52.51
2014	6.58	0.51	-4.07	-4.56	5.95	5.60	1.21	6.94	1.82	8.75	3.95	5.86	44.72
2015	9.68	2.76	5.81	-5.12	9.91	-2.56	6.56	-10.26	-13.99	8.61	5.15	-2.18	11.33
2016	-17.40	-10.90	-1.24	4.45	8.29	-1.74	11.03	-2.58	2.59	-9.26	7.33	-1.21	-13.76
2017	3.64	9.37	3.87	1.07	-7.74	8.09	-2.32	3.76	2.68	-0.02	6.41	0.84	32.51
2018	6.50	-3.01											3.30

RC1 (EUR) NAV													
YEAR	JAN	FEB	MAR	APR	MAY	JUN	JUL	AUG	SEP	OCT	NOV	DEC	
2010									104.35	104.75	110.36	115.32	
2011	114.18	116.50	115.79	119.40	125.10	120.47	119.15	110.91	109.86	116.68	118.31	124.92	
2012	132.14	133.59	138.66	139.34	139.09	147.39	148.89	148.83	153.16	145.20	149.21	146.92	
2013	156.14	164.59	177.28	183.22	192.89	185.65	206.96	204.86	212.69	205.49	224.58	224.79	
2014	240.30	251.66	236.42	223.21	235.00	247.45	248.60	266.95	273.34	293.13	304.24	315.14	
2015	349.47	373.47	398.19	373.48	411.03	404.45	422.31	375.75	328.13	355.37	380.41	374.15	
2016	304.81	288.23	287.45	301.80	322.91	313.37	342.82	333.71	339.38	299.66	324.90	327.48	
2017	344.40	383.08	399.53	400.83	364.36	400.14	393.87	411.29	415.46	410.84	431.35	439.53	
2018	469.64	469.79											

RC1 (EUR) PERFORMANCE % NET OF FEES													
YEAR	JAN	FEB	MAR	APR	MAY	JUN	JUL	AUG	SEP	OCT	NOV	DEC	TOTAL
2010									4.35	0.38	5.36	4.49	15.32
2011	-0.99	2.03	-0.61	3.12	4.77	-3.70	-1.10	-6.92	-0.95	6.21	1.40	5.59	8.32
2012	5.78	1.10	3.80	0.49	-0.18	5.97	1.02	-0.04	2.91	-5.20	2.76	-1.53	17.61
2013	6.28	5.41	7.71	3.35	5.28	-3.75	11.48	-1.01	3.82	-3.39	9.29	0.09	53.00
2014	6.90	4.73	-6.06	-5.59	5.28	5.30	0.46	7.38	2.39	7.24	3.80	3.58	40.19
2015	10.89	6.87	6.62	-6.21	10.05	-1.60	4.42	-11.03	-12.67	8.30	7.05	-1.65	18.73
2016	-18.53	-5.44	-0.27	4.99	6.99	-2.95	9.40	-2.66	1.70	-11.70	8.42	0.79	-12.47
2017	5.17	11.23	4.29	0.33	-9.10	9.82	-1.57	4.42	1.01	-1.11	4.99	1.90	34.22
2018	6.85	0.03											6.88

RC1 (SEK) NAV													
YEAR	JAN	FEB	MAR	APR	MAY	JUN	JUL	AUG	SEP	OCT	NOV	DEC	
2009						99.74	99.92	101.00	101.51	96.72	101.85	106.75	
2010	110.70	108.05	115.09	109.18	96.69	93.87	89.69	88.93	93.37	96.59	98.29	102.16	
2011	98.91	100.22	101.80	105.28	111.04	109.04	107.03	100.09	100.29	104.24	106.42	111.05	
2012	118.78	118.87	123.79	125.05	125.79	130.61	126.17	125.85	131.65	127.25	131.60	128.55	
2013	136.76	141.24	150.89	158.78	168.47	165.25	182.72	181.89	188.61	184.41	203.02	202.38	
2014	215.63	226.61	216.26	206.33	218.55	230.73	233.43	249.55	253.98	276.09	286.74	302.97	
2015	332.20	356.11	376.45	357.02	392.32	381.98	406.89	365.09	313.86	340.74	358.11	350.16	
2016	289.10	274.97	271.43	283.40	306.76	301.29	334.38	325.60	333.90	302.85	324.90	320.85	
2017	332.37	374.59	388.12	392.14	361.60	390.79	381.55	395.80	406.28	406.01	431.88	435.88	
2018	464.01	476.10											

RC1 (SEK) PERFORMANCE % NET OF FEES													
YEAR	JAN	FEB	MAR	APR	MAY	JUN	JUL	AUG	SEP	OCT	NOV	DEC	TOTAL
2009						-0.26	0.18	1.08	0.50	-4.72	5.30	4.81	6.75
2010	3.70	-2.39	6.52	-5.14	-11.44	-2.92	-4.45	-0.85	4.99	3.45	1.76	3.94	-4.30
2011	-3.18	1.32	1.58	3.42	5.47	-1.80	-1.84	-6.48	0.20	3.94	2.09	4.35	8.70
2012	6.96	0.08	4.14	1.02	0.59	3.83	-3.40	-0.25	4.61	-3.34	3.42	-2.32	15.76
2013	6.39	3.28	6.83	5.23	6.10	-1.91	10.57	-0.45	3.69	-2.23	10.09	-0.32	57.43
2014	6.55	5.09	-4.57	-4.59	5.92	5.57	1.17	6.91	1.78	8.71	3.86	5.66	49.70
2015	9.65	7.20	5.71	-5.16	9.89	-2.64	6.52	-10.27	-14.03	8.56	5.10	-2.22	15.58
2016	-17.44	-4.89	-1.29	4.41	8.24	-1.78	10.98	-2.63	2.55	-9.30	7.28	-1.25	-8.37
2017	3.59	12.70	3.61	1.04	-7.79	8.07	-2.36	3.73	2.65	-0.07	6.37	0.93	35.85
2018	6.45	2.61											9.23

RC2 (SEK) NAV													
YEAR	JAN	FEB	MAR	APR	MAY	JUN	JUL	AUG	SEP	OCT	NOV	DEC	
2009						99.74	99.98	101.12	101.68	96.94	102.10	107.07	
2010	111.07	108.57	115.69	109.78	97.28	94.47	90.31	89.58	94.10	97.38	99.14	103.08	
2011	99.84	101.20	102.84	106.40	112.28	110.30	108.32	101.33	101.58	105.64	107.89	112.63	
2012	120.30	120.44	125.51	126.83	127.66	132.58	128.13	127.86	133.77	129.36	133.84	130.80	
2013	139.17	143.74	153.48	161.57	171.53	167.92	185.74	185.04	192.06	187.86	206.87	206.39	
2014	219.98	231.28	221.05	210.98	223.54	236.05	238.90	255.47	260.24	283.00	293.97	310.92	
2015	341.02	365.80	386.77	366.96	403.34	392.85	418.61	375.87	323.26	351.09	369.14	361.10	
2016	298.25	283.80	280.26	292.73	317.00	311.48	345.83	336.89	345.62	313.62	336.59	332.52	
2017	344.62	388.54	402.06	406.34	374.90	405.23	395.81	410.70	421.71	421.61	448.59	452.80	
2018	482.21	495.26											

RC2 (SEK) PERFORMANCE % NET OF FEES													
YEAR	JAN	FEB	MAR	APR	MAY	JUN	JUL	AUG	SEP	OCT	NOV	DEC	TOTAL
2009						-0.26	0.24	1.14	0.55	-4.66	5.32	4.87	7.07
2010	3.74	-2.25	6.56	-5.11	-11.39	-2.89	-4.40	-0.81	5.05	3.49	1.81	3.97	-3.73
2011	-3.14	1.36	1.62	3.46	5.53	-1.76	-1.80	-6.45	0.25	4.00	2.13	4.39	9.26
2012	6.81	0.12	4.21	1.05	0.65	3.85	-3.36	-0.21	4.62	-3.30	3.46	-2.27	16.13
2013	6.40	3.28	6.78	5.27	6.16	-2.10	10.61	-0.38	3.79	-2.19	10.12	-0.23	57.79
2014	6.58	5.14	-4.42	-4.56	5.95	5.60	1.21	6.94	1.87	8.75	3.88	5.77	50.65
2015	9.68	7.27	5.73	-5.12	9.91	-2.60	6.56	-10.21	-14.00	8.61	5.14	-2.18	16.14
2016	-17.41	-4.84	-1.25	4.45	8.29	-1.74	11.03	-2.59	2.59	-9.26	7.32	-1.21	-7.91
2017	3.64	12.74	3.48	1.06	-7.74	8.09	-2.32	3.76	2.68	-0.02	6.40	0.94	36.17
2018	6.50	2.71											9.38

ABOUT RHENMAN & PARTNERS

Rhenman & Partners Asset Management, founded in 2008, is a Stockholm-based investment manager focusing on two niche funds administered by SEB Fund Services S.A.: Rhenman Healthcare Equity L/S, founded in 2009, and Rhenman Global Opportunities L/S, founded in 2016. Assets under management amount to approximately EUR 500m. Investment Teams of both Funds are in their investment processes supported by renowned Advisory Boards, including professors and experts with many years of market experience and extensive networks around the world.

LEGAL DISCLAIMER

Rhenman Healthcare Equity L/S. "The Fund" is not an investment fund as defined in the European Union directives relating to undertakings for collective investment in transferable securities (UCITS). Legal information regarding Fund is contained in the Prospectus and the KIID, available at Rhenman & Partners Asset Management AB (Rhenman & Partners) webpage: <http://rhepa.com/the-fund/prospectus/>.

This material has been prepared by Rhenman & Partners for professional and non-professional investors. Rhenman & Partners when preparing this information has not taken into account any one customer's particular investment objectives, financial resources or other relevant circumstances and the opinions and recommendations herein are not intended to represent recommendations of particular investments to particular customers. This material is for informational purposes only and should not be construed as an offer or solicitation to sell or buy units of the Fund. Investors is strongly recommended to get professional advice as to whether investment in the Fund is appropriate having regard to their particular investment needs, objectives and financial circumstances, before investing.

All securities' transactions involve risks, which include (among others) the risk of adverse or unanticipated market, financial or political developments and, in international transactions, currency risk. There can be no assurance that an investment in the Fund will achieve profits or avoid incurring substantial losses. There is a high degree of risk inherent in investments and they may not be suitable for all eligible investors. It is possible that an investor may lose some or all of its investment. The past is not necessarily a guide to the future performance of an investment. The value of investments may fall as well as rise and investors may not get back the amount invested. Changes in rates of foreign exchange may cause the value of investments to go up or down.

Before making an investment decision, an investor and/or its adviser should (i) consider the suitability of investments in the Fund with respect to its investment objectives and personal situation and (ii) consider factors such as its personal net worth, income, age, risk tolerance and liquidity needs. Short-term investors and investors who cannot bear the loss of some or all of their investment or the risks associated with the limited liquidity of an investment should not invest.

Due care and attention has been used in the preparation of this information. However, actual results may vary from their forecasts, and any variation may be materially positive or negative. Forecasts, by their very nature, are subject to uncertainty and contingencies, many of which are outside the control of Rhenman & Partners. Rhenman & Partners cannot guarantee that the information contained herein is without fault or entirely accurate. There may be delays, omissions or inaccuracies in the information. Any dated information is published as of its date only and no obligation or responsibility is undertaken to update or amend any such information.

The information in this material is based on sources that Rhenman & Partners believes to be reliable. Rhenman & Partners can however not guarantee that all information is correct. Furthermore, information and opinions may change without notice. Rhenman & Partners is under no obligation to make amendments or changes to this publication if errors are found or opinions or information change. Rhenman & Partners accepts no responsibility for the accuracy of its sources.

Rhenman & Partners is the owner of all works of authorship including, but not limited to, all design text, images and trademarks in this material unless otherwise explicitly stated. The use of Rhenman & Partners' material, works or trademarks is forbidden without written consent except where otherwise expressly stated. Furthermore, it is prohibited to publish material made or gathered by Rhenman & Partners without written consent.

By accessing and using the <http://rhepa.com/> website and any pages thereof, you acknowledge that you have reviewed the following important legal information and understand and agree to the terms and conditions set therein. If you do not agree to the terms and conditions in this disclaimer, do not access or use <http://rhepa.com/website> in any way.

Products and services described herein are not available to all persons in all geographical locations. Rhenman & Partner will not provide any such products or services to any person if the provision of such services could be in violation of law or regulation in such person's home country jurisdiction or any other related jurisdiction. The units of the Fund may not be offered or sold to or within the United States or in any other country where such offer or sale would conflict with applicable laws or regulations.

In no event, including (but not limited to) negligence, will Rhenman & Partner be liable to you or anyone else for any consequential, incidental, special or indirect damages (including but not limited to lost profits, trading losses and damages).

The sole legally binding basis for the purchase of shares of the Fund described in this information is the latest valid sales prospectus with its terms of contract. Subscriptions cannot be received on the basis of financial reports.

An investment in the Fund does not represent deposits or other liabilities of any member of the Rhenman & Partners Group. Neither Rhenman & Partners nor any member of the Rhenman & Partners Group and its affiliates guarantees in any way the performance of the Fund, repayment of capital from the Fund, any particular return from or any increase in the value of the Fund.

SUBSCRIBE TO OUR MONTHLY NEWSLETTER AT WWW.RHEPA.COM

CONTACT DETAILS

Rhenman & Partners
Asset Management AB
Strandvägen 5A
114 51 Stockholm, Sweden
Tel + 46 8 459 88 80
info@rhepa.com

International investors (non Swedish):
Carl Grevelius
Head of Investor Relations
Tel + 46 8 459 88 83
carl@rhepa.com

Swedish investors:
Anders Grelsson
Swedish Investor Relations
Mob + 46 70 374 43 20
anders@rhepa.com

WWW.RHEPA.COM